

For Research Use Only

CoraLite®594-conjugated LONP1 Polyclonal antibody



Catalog Number:CL594-15440

Featured Product

Basic Information

Catalog Number: CL594-15440	GenBank Accession Number: BC000235	Purification Method: Antigen affinity purification
Size: 100ul , Concentration: 1000 µg/ml by Nanodrop;	GeneID (NCBI): 9361	Recommended Dilutions: IF 1:50-1:500
Source: Rabbit	Full Name: Lon peptidase 1, mitochondrial	Excitation/Emission maxima wavelengths: 593 nm / 614 nm
Isotype: IgG	Calculated MW: 106 kDa	
Immunogen Catalog Number: AG7196	Observed MW: 100 kDa	

Applications

Tested Applications: IF	Positive Controls: IF : HepG2 cells,
Species Specificity: human, mouse, rat	

Background Information

LONP1(Lon protease homolog, mitochondrial) is also named as LONP, LONHS, HLON, LON, PRSS15, PIM1, MGC1498 and belongs to the peptidase S16 family. It seems to play a major role in the elimination of oxidatively modified proteins in the mitochondrial matrix(PMID:18021745). LONP1, also a nuclearly encoded and mitochondrially located stress-responsive protease, is involved in heme-mediated ALAS-1 turnover(PMID:21659532). It recognizes specific surface determinants or folds, initiates proteolysis at solvent-accessible sites, and generates unfolded polypeptides that are then progressively degraded(PMID:15870080). LONP1 has some isoforms with the MW of 106 kDa, 100 kDa and 86 kDa.

Storage

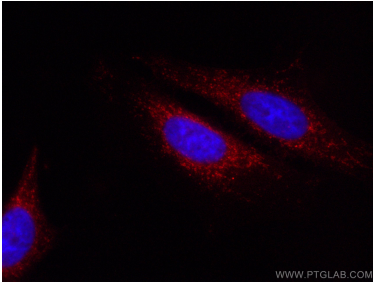
Storage:
Store at -20°C. Avoid exposure to light. Stable for one year after shipment.
Storage Buffer:
PBS with 50% Glycerol, 0.05% Proclin300, 0.5% BSA, pH 7.3.
Aliquoting is unnecessary for -20°C storage

*** 20ul sizes contain 0.1% BSA

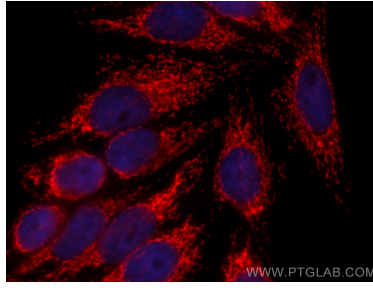
For technical support and original validation data for this product please contact:
T: 1 (888) 4PTGLAB (1-888-478-4522) (toll free in USA), or 1(312) 455-8498 (outside USA) E: proteintech@ptglab.com W: ptglab.com

This product is exclusively available under Proteintech Group brand and is not available to purchase from any other manufacturer.

Selected Validation Data



Immunofluorescent analysis of (4% PFA) fixed HepG2 cells using CoraLite®594 LONP1 antibody (CL594-15440) at dilution of 1:200.



Immunofluorescent analysis of (4% PFA) fixed HepG2 cells using CoraLite®594 LONP1 antibody (CL594-15440) at dilution of 1:200.