

For Research Use Only

# CoraLite®594-conjugated LC3 Polyclonal antibody

Catalog Number:CL594-14600

Featured Product



## Basic Information

**Catalog Number:**

CL594-14600

**Size:**

100ul , Concentration: 1000 ug/ml by  
Nanodrop;

**Source:**

Rabbit

**Isotype:**

IgG

**Immunogen Catalog Number:**

AG6144

**GenBank Accession Number:**

BC067797

**GeneID (NCBI):**

81631

**ENSEMBL Gene ID:**

ENSG00000140941

**UNIPROT ID:**

Q9GZQ8

**Full Name:**

microtubule-associated protein 1  
light chain 3 beta

**Calculated MW:**

15 kDa

**Observed MW:**

14-18 kDa

**Purification Method:**

Antigen affinity purification

**Recommended Dilutions:**

IF/ICC 1:50-1:500

**Excitation/Emission maxima  
wavelengths:**

588 nm / 604 nm

## Applications

**Tested Applications:**

IF/ICC, FC (Intra)

**Species Specificity:**

human, mouse, rat

**Positive Controls:**

IF/ICC : Chloroquine treated HepG2 cells,

## Background Information

Map1LC3, also known as LC3, is the human homolog of yeast Atg8 and is involved in the formation of autophagosomal vacuoles, called autophagosomes. Three human Map1LC3 isoforms, MAP1LC3A, MAP1LC3B, and MAP1LC3C, undergo post-translational modifications during autophagy. And they differ in their post-translation modifications during autophagy. Map1LC3 also exists in two modified forms, an 18 kDa cytoplasmic form that was originally identified as a subunit of the microtubule-associated protein 1, and a 14-16 kDa form that is associated with the autophagosome membrane. This antibody can cross react with MAP1LC3A, MAP1LC3B, and MAP1LC3C.

## Storage

**Storage:**

Store at -20°C. Avoid exposure to light. Stable for one year after shipment.

**Storage Buffer:**

PBS with 50% Glycerol, 0.05% Proclin300, 0.5% BSA, pH 7.3.

Aliquoting is unnecessary for -20°C storage

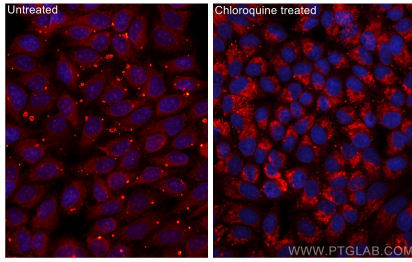
For technical support and original validation data for this product please contact:

T: 1 (888) 4PTGLAB (1-888-478-4522) (toll free  
in USA), or 1(312) 455-8498 (outside USA)

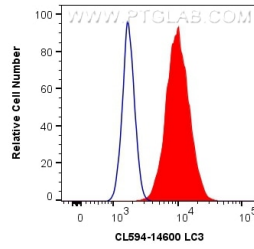
E: [proteintech@ptglab.com](mailto:proteintech@ptglab.com)  
W: [ptglab.com](http://ptglab.com)

This product is exclusively available under Proteintech Group brand and is not available to purchase from any other manufacturer.

## Selected Validation Data



Immunofluorescent analysis of (-20°C Ethanol) fixed Chloroquine treated HepG2 cells using CoraLite®594 LC3 antibody (CL594-14600) at dilution of 1:100.



1X10<sup>6</sup> HeLa cells were intracellularly stained with 0.4 ug CoraLite®594 Anti-Human LC3 (CL594-14600) (red), or 0.4 ug CoraLite®594-conjugated Rabbit IgG control Rabbit PolyAb (CL594-30000, Clone: ) (blue). Cells were fixed with 4% PFA and permeabilized with Flow Cytometry Perm Buffer (PF00011-C).