

For Research Use Only



# CoraLite®594-conjugated Apolipoprotein AI Polyclonal antibody

Catalog Number: **CL594-14427**

## Basic Information

<b>Catalog Number:</b> CL594-14427	<b>GenBank Accession Number:</b> BC005380	<b>Purification Method:</b> Antigen affinity purification
<b>Size:</b> 100ul , Concentration: 1000 µg/ml by Nanodrop;	<b>GeneID (NCBI):</b> 335	<b>Recommended Dilutions:</b> IF-P 1:50-1:500
<b>Source:</b> Rabbit	<b>UNIPROT ID:</b> P02647	<b>Excitation/Emission maxima wavelengths:</b> 588 nm / 604 nm
<b>Isotype:</b> IgG	<b>Full Name:</b> apolipoprotein A-I	
<b>Immunogen Catalog Number:</b> AG5793	<b>Calculated MW:</b> 31 kDa	
	<b>Observed MW:</b> 26-30 kDa	

## Applications

**Tested Applications:**  
IF, FC (Intra)

**Species Specificity:**  
human, mouse

**Positive Controls:**

IF-P : mouse liver tissue,

## Background Information

ApoA1 is a major protein component of high density lipoproteins (HDL) which is associated with reversed cholesterol transport, lipid/cholesterol binding, lecithin/cholesterol acyltransferase (LCAT) activation and specific receptors binding. It is synthesized in the liver and small intestine. Defects of ApoA1 cause low HDL level and systemic non-neuropathic amyloidosis. Serum concentration of ApoA1 is inversely related to the risk of developing atherosclerosis. This antibody was generated against the C-terminal region of human ApoA1.

## Storage

**Storage:**

Store at -20°C. Avoid exposure to light.

**Storage Buffer:**

PBS with 50% Glycerol, 0.05% Proclin300, 0.5% BSA, pH 7.3.

Aliquoting is unnecessary for -20°C storage

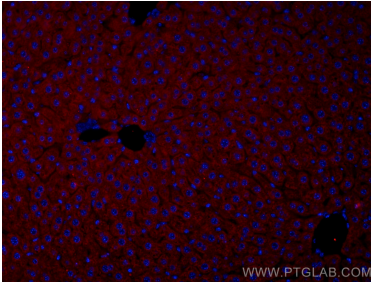
For technical support and original validation data for this product please contact:

T: 1 (888) 4PTGLAB (1-888-478-4522) (toll free  
in USA), or 1(312) 455-8498 (outside USA)

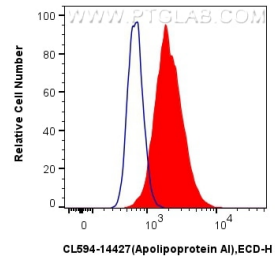
E: [proteintech@ptglab.com](mailto:proteintech@ptglab.com)  
W: [ptglab.com](http://ptglab.com)

**This product is exclusively available under Proteintech Group brand and is not available to purchase from any other manufacturer.**

## Selected Validation Data



Immunofluorescent analysis of (4% PFA) fixed mouse liver tissue using CoraLite®594 Apolipoprotein AI antibody (CL594-14427) at dilution of 1:200.



1X10<sup>6</sup> HepG2 cells were intracellularly stained with 0.4 ug CoraLite®594 Anti-Human Apolipoprotein AI (CL594-14427) (red), or 0.4 ug CoraLite®594-conjugated Rabbit IgG control Rabbit PolyAb (CL594-30000, Clone: ) (blue). Cells were fixed with 4% PFA and permeabilized with Flow Cytometry Perm Buffer (PF00011-C).