

For Research Use Only

CoraLite®594-conjugated Alpha smooth muscle actin actin Polyclonal antibody



Catalog Number: CL594-14395

Featured Product

1 Publications

Basic Information

Catalog Number:

CL594-14395

Size:

100ul , Concentration: 1000 ug/ml by Nanodrop;

Source:

Rabbit

Isotype:

IgG

Immunogen Catalog Number:

AG5886

GenBank Accession Number:

BC017554

GeneID (NCBI):

59

UNIPROT ID:

P62736

Full Name:

actin, alpha 2, smooth muscle, aorta

Calculated MW:

377 aa, 42 kDa

Observed MW:

43 kDa

Purification Method:

Antigen affinity purification

Recommended Dilutions:

IF-P 1:50-1:500

Excitation/Emission maxima wavelengths:

588 nm / 604 nm

Applications

Tested Applications:

IF-P

Cited Applications:

IF

Species Specificity:

human, mouse, rat

Positive Controls:

IF-P : mouse heart tissue, mouse small intestine tissue

Background Information

ACTA2 (also known as α -smooth muscle actin or α -SMA) belongs to the actin family. Actins are highly conserved proteins that are involved in various types of cell motility and are ubiquitously expressed in all eukaryotic cells. ACTA2 is primarily expressed in vascular smooth muscle and anti-ACTA2 is commonly used to marker smooth muscle cells. This antibody may cross-react with other isoforms of actins.

Notable Publications

| Author | Pubmed ID | Journal | Application |
|--------------|-----------|-----------------|-------------|
| Xin-Miao Xue | 36569293 | Front Pharmacol | IF |

Storage

Storage:

Store at -20°C. Avoid exposure to light. Stable for one year after shipment.

Storage Buffer:

PBS with 50% Glycerol, 0.05% Proclin300, 0.5% BSA, pH 7.3.

Aliquoting is unnecessary for -20°C storage

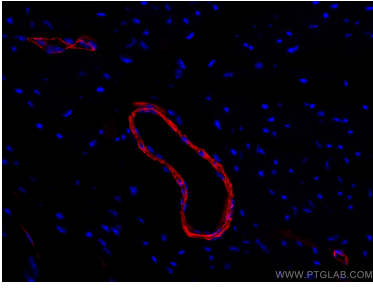
For technical support and original validation data for this product please contact:

T: 1 (888) 4PTGLAB (1-888-478-4522) (toll free in USA), or 1(312) 455-8498 (outside USA)

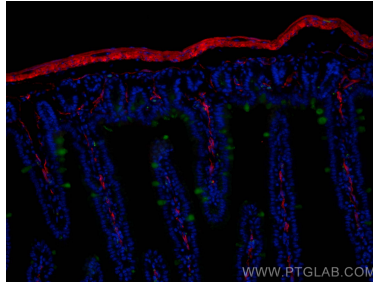
E: proteintech@ptglab.com
W: ptglab.com

This product is exclusively available under Proteintech Group brand and is not available to purchase from any other manufacturer.

Selected Validation Data



Immunofluorescent analysis of (4% PFA) fixed mouse heart tissue using CoraLite®594 smooth muscle actin antibody (CL594-14395) at dilution of 1:200.



Immunofluorescent analysis of (4% PFA) fixed mouse small intestine tissue using CoraLite®594 smooth muscle actin antibody (CL594-14395) at dilution of 1:200, CoraLite® Plus 488 ZG16 antibody (CL488-67389, Clone: 1A7B9, green).