

For Research Use Only

# CoraLite®594-conjugated IFT88 Polyclonal antibody

Catalog Number:CL594-13967

Featured Product



## Basic Information

**Catalog Number:**

CL594-13967

**Size:**

100ul , Concentration: 1000 ug/ml by  
Nanodrop;

**Source:**

Rabbit

**Isotype:**

IgG

**Immunogen Catalog Number:**

AG4980

**GenBank Accession Number:**

BC030776

**GeneID (NCBI):**

8100

**UNIPROT ID:**

Q13099

**Full Name:**

intraflagellar transport 88 homolog  
(Chlamydomonas)

**Calculated MW:**

94 kDa

**Observed MW:**

88-95 kDa

**Purification Method:**

Antigen affinity purification

**Recommended Dilutions:**

IF/ICC 1:50-1:500

**Excitation/Emission maxima  
wavelengths:**

588 nm / 604 nm

## Applications

**Tested Applications:**

IF/ICC

**Species Specificity:**

human, mouse, rat, Canine

**Positive Controls:**

IF/ICC : MDCK cells, hTERT-RPE1 cells

## Background Information

Intraflagellar transport (IFT), mediated by molecular motors and IFT particles, is an important transport process that occurs in the cilium and has been shown to be essential for the assembly and maintenance of cilia and flagella in many organisms. IFT88 (intraflagellar transport protein 88; also known as TG737 or TTC10) is a component of IFT particles and required for cilium biogenesis. Defects in IFT88/Tg737 lead to polycystic kidney disease (11062270). IFT88 localizes to spindle poles during mitosis and is required for spindle orientation in mitosis (21441926). This antibody was raised against the C-terminal region of human IFT88 and can detect the endogenous level of IFT88.

## Storage

**Storage:**

Store at -20°C. Avoid exposure to light. Stable for one year after shipment.

**Storage Buffer:**

PBS with 50% Glycerol, 0.05% Proclin300, 0.5% BSA, pH 7.3.

Aliquoting is unnecessary for -20°C storage

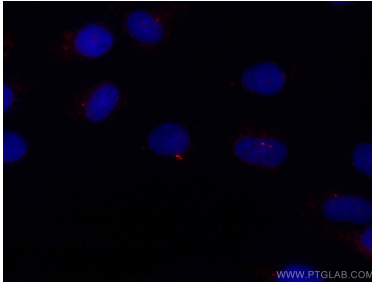
For technical support and original validation data for this product please contact:

T: 1 (888) 4PTGLAB (1-888-478-4522) (toll free  
in USA), or 1(312) 455-8498 (outside USA)

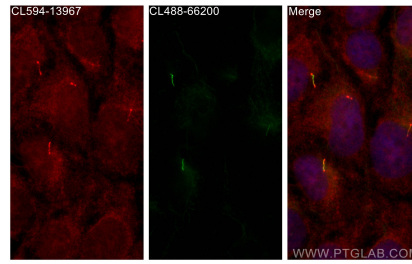
E: [proteintech@ptglab.com](mailto:proteintech@ptglab.com)  
W: [ptglab.com](http://ptglab.com)

This product is exclusively available under Proteintech Group brand and is not available to purchase from any other manufacturer.

## Selected Validation Data



Immunofluorescent analysis of (4% PFA) fixed MDCK cells using CoraLite®594 IFT88 antibody (CL594-13967) at dilution of 1:200.



Immunofluorescent analysis of (4% PFA) fixed hTERT-RPE1 cells using CoraLite®594 IFT88 antibody (CL594-13967) at dilution of 1:200, CoraLite® Plus 488 acetylated Tubulin(Lys40) antibody (CL488-66200, Clone: 7E5H8, green).