

For Research Use Only

# CoraLite®594-conjugated GOLGA2/GM130 Polyclonal antibody

Catalog Number: CL594-11308

Featured Product

1 Publications



## Basic Information

Catalog Number:

CL594-11308

Size:

100ul, Concentration: 1000 ug/ml by Nanodrop;

Source:

Rabbit

Isotype:

IgG

Immunogen Catalog Number:

AG1848

GenBank Accession Number:

BC014188

GeneID (NCBI):

2801

UNIPROT ID:

Q08379

Full Name:

golgi autoantigen, golgin subfamily a, 2

Calculated MW:

111 kDa

Purification Method:

Antigen affinity purification

Recommended Dilutions:

IF/ICC: 1:50-1:500

FC (Intra): 0.20 ug per 10<sup>6</sup> cells in a 100 µl suspension

Excitation/Emission maxima wavelengths:

588 nm / 604 nm

## Applications

Tested Applications:

IF/ICC, FC (Intra)

Cited Applications:

IF

Species Specificity:

human

Cited Species:

human

Positive Controls:

IF/ICC : HepG2 cells,

FC (Intra) : HepG2 cells,

## Background Information

GOLGA2, also known as GM130, is a 130 kDa cis-Golgi matrix protein, one component of the detergent and salt-resistant Golgi matrix. It is a peripheral membrane protein highly bound to the Golgi membrane and localized mainly at the cytoplasmic face of the cis-Golgi membrane. Together with its interacting partner proteins, including p115, giantin, GRASP65, and Rab GTPase, GOLGA2/GM130 is involved in regulating ER-to-Golgi transport and maintaining the Golgi structure. Emerging evidence suggests that the GOLGA2/GM130 has potential roles in the control of glycosylation, cell cycle progression, and higher-order cell functions such as cell polarization and directed cell migration. (PMID: 20197635)

## Notable Publications

Author	Pubmed ID	Journal	Application
Qiu Pan	38253527	Nat Commun	IF

## Storage

Storage:

Store at -20°C. Avoid exposure to light. Stable for one year after shipment.

Storage Buffer:

PBS with 50% glycerol, 0.05% Proclin300, 0.5% BSA, pH7.3

Aliquoting is unnecessary for -20°C storage

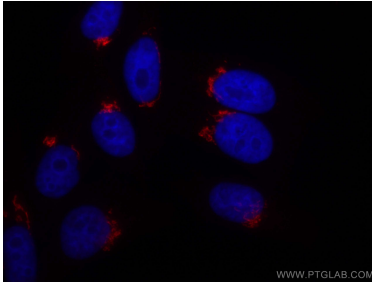
For technical support and original validation data for this product please contact:

T: 1 (888) 4PTGLAB (1-888-478-4522) (toll free in USA), or 1(312) 455-8498 (outside USA)

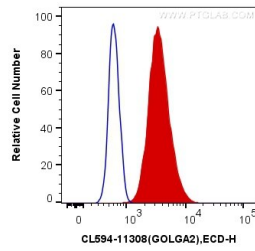
E: [proteintech@ptglab.com](mailto:proteintech@ptglab.com)  
W: [ptglab.com](http://ptglab.com)

This product is exclusively available under Proteintech Group brand and is not available to purchase from any other manufacturer.

## Selected Validation Data



Immunofluorescent analysis of (4% PFA) fixed HepG2 cells using CoraLite®594 GOLGA2/GM130 antibody (CL594-11308) at dilution of 1:200.



1X10<sup>6</sup> HepG2 cells were intracellularly stained with 0.2 ug CoraLite®594 Anti-Human GOLGA2/GM130 (CL594-11308) (red), or 0.2 ug Control Antibody. Cells were fixed with 4% PFA and permeabilized with Flow Cytometry Perm Buffer (PF00011-C).