

For Research Use Only

# CoraLite®594-conjugated NF-κB p65 Polyclonal antibody

Catalog Number:CL594-10745

Featured Product

2 Publications



## Basic Information

<b>Catalog Number:</b> CL594-10745	<b>GenBank Accession Number:</b> BC011603	<b>Purification Method:</b> Antigen affinity purification
<b>Size:</b> 100ul , Concentration: 1000 ug/ml by Nanodrop;	<b>GeneID (NCBI):</b> 5970	<b>Recommended Dilutions:</b> IF/ICC 1:50-1:500
<b>Source:</b> Rabbit	<b>UNIPROT ID:</b> Q04206	<b>Excitation/Emission maxima wavelengths:</b> 588 nm / 604 nm
<b>Isotype:</b> IgG	<b>Full Name:</b> v-rel reticuloendotheliosis viral oncogene homolog A (avian)	
<b>Immunogen Catalog Number:</b> AG1199	<b>Calculated MW:</b> 65 kDa	
	<b>Observed MW:</b> 65 kDa	

## Applications

<b>Tested Applications:</b> IF/ICC	<b>Positive Controls:</b> IF/ICC : HepG2 cells, TNF alpha treated HT-1080 cells
<b>Cited Applications:</b> IF	
<b>Species Specificity:</b> human, mouse, rat, pig	
<b>Cited Species:</b> mouse	

## Background Information

Nuclear factor κ B (NF-κB) is a sequence-specific DNA-binding protein complex which regulates the expression of viral genomes, including the human immunodeficiency virus, and a variety of cellular genes, particularly those involved in immune and inflammatory responses. The members of the NF-κB family in mammalian cells include the proto-oncogene c-Rel, p50/p105 (NFκB1), p65 (RelA), p52/p100 (NFκB2), and RelB. All of these proteins share a conserved 300-amino acid region known as the Rel homology domain which is responsible for DNA binding, dimerization, and nuclear translocation of NF-κB. The p65 subunit is a major component of NF-κB complexes and is responsible for trans-activation. NF-κB heterodimeric p65-p50 and p65-c-Rel complexes are transcriptional activators. The NF-κB p65-p65 complex appears to be involved in invasion-mediated activation of IL-8 expression. The inhibitory effect of IκB upon NF-κB in the cytoplasm is exerted primarily through the interaction with p65. p65 shows a weak DNA-binding site which could contribute directly to DNA binding in the NF-κB complex. It associates with chromatin at the NF-κB promoter region via association with DDx1. This antibody is a rabbit polyclonal antibody raised against residues near the N terminus of human RELA.

## Notable Publications

Author	Pubmed ID	Journal	Application
Zhiyuan Yu	36091713	Front Med (Lausanne)	IF
Zhiyuan Yu	37036417	Invest Ophthalmol Vis Sci	IF

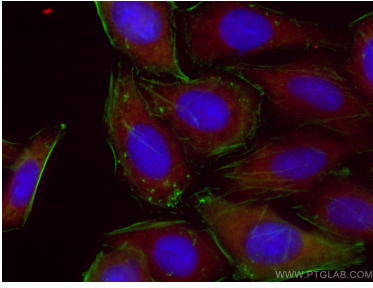
## Storage

**Storage:**  
Store at -20°C. Avoid exposure to light. Stable for one year after shipment.  
**Storage Buffer:**  
PBS with 50% Glycerol, 0.05% Proclin300, 0.5% BSA, pH 7.3.  
Aliquoting is unnecessary for -20°C storage

For technical support and original validation data for this product please contact:  
T: 1 (888) 4PTGLAB (1-888-478-4522) (toll free in USA), or 1(312) 455-8498 (outside USA)  
E: proteintech@ptglab.com  
W: ptglab.com

This product is exclusively available under Proteintech Group brand and is not available to purchase from any other manufacturer.

## Selected Validation Data



Immunofluorescent analysis of (-20°C Methanol) fixed HepG2 cells using CoraLite®594 NF-κB p65 antibody (CL594-10745) at dilution of 1:100, CoraLite®488 Beta Actin antibody (CL488-66009, Clone: 2D4H5, green), DAPI (Blue).