

For Research Use Only

CoraLite®594-conjugated transgelin/SM22 Polyclonal antibody



Catalog Number:CL594-10493

Featured Product

Basic Information

Catalog Number: CL594-10493	GenBank Accession Number: BC004927	Purification Method: Antigen affinity purification
Size: 100ul , Concentration: 1000 µg/ml by Nanodrop;	GeneID (NCBI): 6876	Recommended Dilutions: IF 1:50-1:500
Source: Rabbit	Full Name: transgelin	Excitation/Emission maxima wavelengths: 593 nm / 614 nm
Isotype: IgG	Calculated MW: 22 kDa	
Immunogen Catalog Number: AG0764	Observed MW: 19-22 kDa	

Applications

Tested Applications: IF	Positive Controls: IF : mouse heart tissue,
Species Specificity: human, mouse, rat	

Background Information

The transgelin family is a group of proteins that belong to 22kd actin-related calponin superfamily. Of all three isoforms, transgelin 1 is the best characterized. Transgelin 1, also known as SM22alpha, is a specific marker for differentiated smooth muscle cells. Transgelin 2, also known as SM22 beta, is expressed by both smooth muscle and non-smooth muscle cells in a temporally and spatially regulated pattern. Transgelin 3, also known as NP25, is only found in highly differentiated neuronal cells. This antibody was generated against full length transgelin 1 protein. It can cross-react with other two transgelins based on the sequence similarity.

Storage

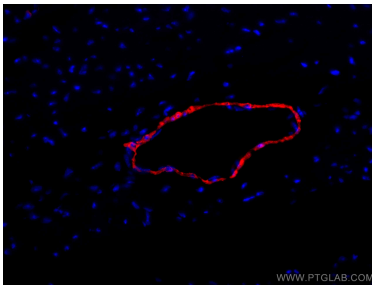
Storage:
Store at -20°C. Avoid exposure to light.
Storage Buffer:
PBS with 50% Glycerol, 0.05% Proclin300, 0.5% BSA, pH 7.3.
Aliquoting is unnecessary for -20°C storage

*** 20ul sizes contain 0.1% BSA

For technical support and original validation data for this product please contact:
T: 1 (888) 4PTGLAB (1-888-478-4522) (toll free in USA), or 1(312) 455-8498 (outside USA)
E: proteintech@ptglab.com
W: ptglab.com

This product is exclusively available under Proteintech Group brand and is not available to purchase from any other manufacturer.

Selected Validation Data



Immunofluorescent analysis of (4% PFA) fixed mouse heart tissue using CoraLite® 594 transgelin/SM22 antibody (CL594-10493) at dilution of 1:200.