

For Research Use Only

# CoraLite®594-conjugated Mitofilin Polyclonal antibody



Catalog Number:CL594-10179

Featured Product

## Basic Information

<b>Catalog Number:</b> CL594-10179	<b>GenBank Accession Number:</b> BC002412	<b>Purification Method:</b> Antigen affinity purification
<b>Size:</b> 100ul , Concentration: 1000 µg/ml by Nanodrop;	<b>GeneID (NCBI):</b> 10989	<b>Recommended Dilutions:</b> IF 1:50-1:500
<b>Source:</b> Rabbit	<b>Full Name:</b> inner membrane protein, mitochondrial (mitofilin)	<b>Excitation/Emission maximum wavelengths:</b> 593 nm / 614 nm
<b>Isotype:</b> IgG	<b>Calculated MW:</b> 90 kDa	
<b>Immunogen Catalog Number:</b> AG0102	<b>Observed MW:</b> 80-90 kDa	

## Applications

<b>Tested Applications:</b> FC (Intra), IF	<b>Positive Controls:</b> IF : HeLa cells,
<b>Species Specificity:</b> human, mouse, rat	

## Background Information

IMMT (also known as mitofilin) is an inner mitochondrial membrane protein that is preferentially expressed in heart tissue and is commonly used as the marker for mitochondria. Mitofilin is known to be a critical organizer of mitochondrial cristae morphology and is indispensable for normal mitochondrial function. Three isoforms of mitofilin exist due to the alternative splicing. All three proteins of 87kD, 89kD and 80kD can be detected in immunoblot analysis with this antibody.

## Storage

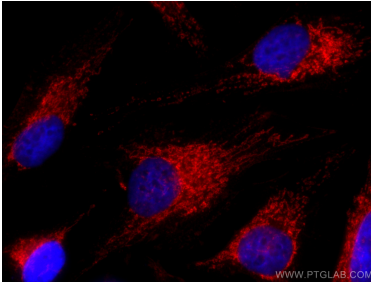
**Storage:**  
Store at -20°C. Avoid exposure to light.  
**Storage Buffer:**  
PBS with 50% Glycerol, 0.05% Proclin300, 0.5% BSA, pH 7.3.  
Aliquoting is unnecessary for -20°C storage

\*\*\* 20ul sizes contain 0.1% BSA

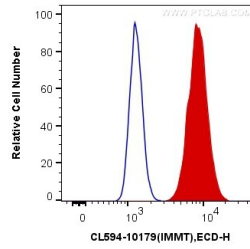
For technical support and original validation data for this product please contact:  
T: 1 (888) 4PTGLAB (1-888-478-4522) (toll free in USA), or 1(312) 455-8498 (outside USA)  
E: proteintech@ptglab.com  
W: ptglab.com

This product is exclusively available under Proteintech Group brand and is not available to purchase from any other manufacturer.

## Selected Validation Data



Immunofluorescent analysis of (4% PFA) fixed HeLa cells using CoraLite®594 Mitofilin antibody (CL594-10179) at dilution of 1:100.



1X10<sup>6</sup> HEK-293T cells were intracellularly stained with 0.4 ug CoraLite®594 Anti-Human Mitofilin (CL594-10179) (red), or 0.4 ug Control Antibody. Cells were fixed with 4% PFA and permeabilized with Flow Cytometry Perm Buffer (PF00011-C).