

For Research Use Only

CoraLite®568-conjugated Lamin B1 Monoclonal antibody



Catalog Number: CL568-66095

Featured Product

Basic Information

Catalog Number: CL568-66095	GenBank Accession Number: BC012295	Purification Method: Protein G purification
Size: 100ul , Concentration: 1000 µg/ml by Nanodrop;	GeneID (NCBI): 4001	CloneNo.: 3C10G12
Source: Mouse	Full Name: lamin B1	Recommended Dilutions: IF 1:300-1:1200
Isotype: IgG1	Calculated MW: 66 kDa	Excitation/Emission maxima wavelengths: 562 nm / 583 nm
Immunogen Catalog Number: AG20522	Observed MW: 66-70 kDa	

Applications

Tested Applications: FC (Intra), IF	Positive Controls: IF : HUVEC cells,
Species Specificity: human, mouse, rat	

Background Information

Lamins are components of the nuclear lamina, a fibrous layer on the nucleoplasmic side of the inner nuclear membrane, which is thought to provide a framework for the nuclear envelope and may also interact with chromatin. The nuclear lamina consists of a two-dimensional matrix of proteins located next to the inner nuclear membrane. The lamin family of proteins make up the matrix and are highly conserved in evolution. During mitosis, the lamina matrix is reversibly disassembled as the lamin proteins are phosphorylated. Vertebrate lamins consist of two types, A and B. This gene encodes one of the two B type proteins, B1. This protein is not suitable for samples where the nuclear envelope has been removed.

Storage

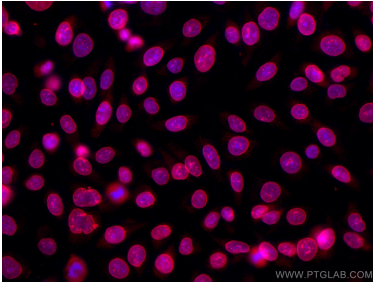
Storage:
Store at -20°C. Avoid exposure to light. Stable for one year after shipment.
Storage Buffer:
PBS with 50% Glycerol, 0.05% Proclin300, 0.5% BSA, pH 7.3.
Aliquoting is unnecessary for -20°C storage

*** 20ul sizes contain 0.1% BSA

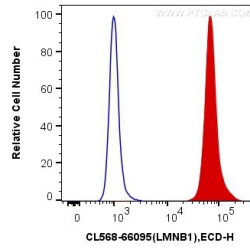
For technical support and original validation data for this product please contact:
T: 1 (888) 4PTGLAB (1-888-478-4522) (toll free in USA), or 1(312) 455-8498 (outside USA)
E: proteintech@ptglab.com
W: ptglab.com

This product is exclusively available under Proteintech Group brand and is not available to purchase from any other manufacturer.

Selected Validation Data



Immunofluorescent analysis of (-20°C Methanol) fixed HUVEC cells using CoraLite®568 Lamin B1 antibody (CL568-66095, Clone: 3C10G12) at dilution of 1:600.



1X10⁶ HeLa cells were intracellularly stained with 0.4 ug CoraLite®568 Anti-Human Lamin B1 (CL568-66095, Clone:3C10G12) (red), or 0.4 ug Control Antibody. Cells were fixed and permeabilized with Transcription Factor Staining Buffer Kit (PF00011).