

For Research Use Only

CoraLite®555-conjugated Phospho-S6 Ribosomal protein (Ser236) Recombinant antibody



Catalog Number:CL555-80206

Basic Information

Catalog Number: CL555-80206	GenBank Accession Number: BC000524	Purification Method: Protein A purification
Size: 100ul , Concentration: 1000 µg/ml by Nanodrop;	GeneID (NCBI): 6194	CloneNo.: 7K17
Source: Rabbit	Full Name: ribosomal protein S6	Excitation/Emission maximum wavelengths: 557 nm / 570 nm
Isotype: IgG	Calculated MW: 29 kDa	
	Observed MW: 32 kDa	

Applications

Tested Applications:
FC (Intra)

Species Specificity:
Human, mouse

Background Information

Ribosomal protein S6 (RPS6) is one of the components of the 40S ribosomal subunit. RPS6 has been functionally regarded as the stimulator and/or inhibitor of certain types of mRNA translation, as well as the regulator of cellular metabolisms, cells size, survival and proliferation. RPS6 is phosphorylated at multiple sites, comprised between Ser235 and Ser247, by the p70 rpS6 kinase (S6K) 1, which is a major downstream effector of the mammalian target of rapamycin complex 1 (mTORC1). Phosphorylation of RPS6 at the dual site Ser235/236 occurs also independently of mTORC1, via the p90 ribosomal S6 kinases (RSK), which are activated by the extracellular signal-regulated kinases (ERK). Recent studies performed in pancreatic β -cells identified PKA as an additional RPS6 kinase, specifically involved in the phosphorylation of Ser235/236. (PMID: 26490682, PMID: 21814187, PMID: 31112404). 80206-1-RR specifically recognizes the phosphorylation site of Ser236 or dual site Ser235/236.

Storage

Storage:
Store at -20°C. Avoid exposure to light. Stable for one year after shipment.

Storage Buffer:
PBS with 50% Glycerol, 0.05% Proclin300, 0.5% BSA, pH 7.3.

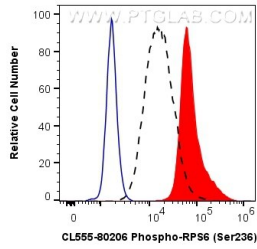
Aliquoting is unnecessary for -20°C storage

*** 20ul sizes contain 0.1% BSA

For technical support and original validation data for this product please contact:
T: 1 (888) 4PTGLAB (1-888-478-4522) (toll free in USA), or 1(312) 455-8498 (outside USA) E: proteintech@ptglab.com W: ptglab.com

This product is exclusively available under Proteintech Group brand and is not available to purchase from any other manufacturer.

Selected Validation Data



1X10⁶ HEK-293 cells untreated (dashed lines) or treated with Calyculin A (red) were intracellularly stained with 0.25 ug Coralite®555 Anti-Human Phospho-S6 Ribosomal protein (Ser236) (CL555-80206, Clone:7K17), or 0.25 ug Control Antibody (blue). Cells were fixed with 4% PFA and permeabilized with 90% MeOH.