

For Research Use Only

# CoraLite®555-conjugated Palladin Polyclonal antibody



Catalog Number:CL555-10853

## Basic Information

<b>Catalog Number:</b> CL555-10853	<b>GenBank Accession Number:</b> BC013867	<b>Purification Method:</b> Antigen affinity purification
<b>Size:</b> 100ul , Concentration: 1000 µg/ml by Nanodrop;	<b>GeneID (NCBI):</b> 23022	<b>Recommended Dilutions:</b> IF 1:50-1:500
<b>Source:</b> Rabbit	<b>Full Name:</b> palladin, cytoskeletal associated protein	<b>Excitation/Emission maxima wavelengths:</b> 557 nm/570 nm
<b>IsoType:</b> IgG	<b>Calculated MW:</b> 1383 aa, 151 kDa	
<b>Immunogen Catalog Number:</b> AG1288	<b>Observed MW:</b> 95 kDa, 140 kDa	

## Applications

<b>Tested Applications:</b> FC (Intra), IF	<b>Positive Controls:</b> IF : mouse testis tissue,
<b>Species Specificity:</b> human, mouse	

## Background Information

Palladin is an actin associated protein serving as a cytoskeleton scaffold, and actin cross linker, localizing at stress fibers, focal adhesions, and other actin based structures. Palladin exists as multiple isoforms through alternative transcription initiation sites and splicing. There are three major isoforms (200, 140, 90-92 kDa) and multiple minor isoforms. Different palladin isoforms are expressed in a tissue-specific pattern during development and in adult organs: the 200 kDa isoform is predominantly expressed in the heart, skeletal muscle, testis and bone; the 140 kDa isoform is widely expressed with the exception of liver, muscle, and skin; the 90-92 kDa isoform is broadly expressed in embryonic tissues and highly expressed in adult smooth muscle tissues (21455759). Recently overexpression of palladin has been linked to the promoted invasive motility in several types of cancers (18978809, 22291919). The 85-90 kDa palladin isoform has been observed predominantly expressed in pancreatic ductal adenocarcinoma (PDA) while a 65 kDa isoform is expressed in normal pancreas and non-PDA tumors (20436683). This antibody, generated against the fragment 999-1383aa of palladin, recognizes most isoforms of this protein, except isoform 6.

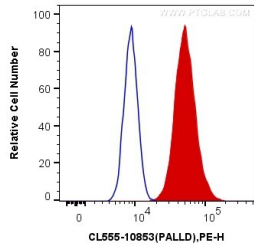
## Storage

**Storage:**  
Store at -20°C. Avoid exposure to light.  
**Storage Buffer:**  
PBS with 50% Glycerol, 0.05% Proclin300, 0.5% BSA, pH 7.3.  
**Aliquoting is unnecessary for -20°C storage**

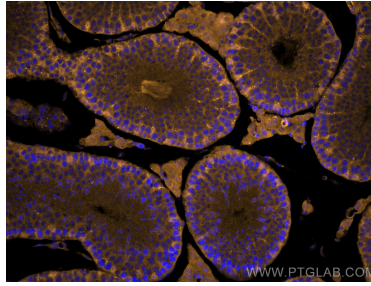
For technical support and original validation data for this product please contact:  
T: 1 (888) 4PTGLAB (1-888-478-4522) (toll free in USA), or 1(312) 455-8498 (outside USA)  
E: proteintech@ptglab.com  
W: ptglab.com

**This product is exclusively available under Proteintech Group brand and is not available to purchase from any other manufacturer.**

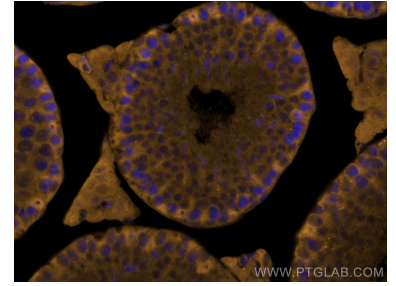
## Selected Validation Data



1X10<sup>6</sup> HeLa cells were intracellularly stained with 0.4 ug Coralite®555 Anti-Human Palladin (CL555-10853) (red), or 0.4 ug Control Antibody. Cells were fixed with 4% PFA and permeabilized with Flow Cytometry Perm Buffer (PF00011-C).



Immunofluorescent analysis of (4% PFA) fixed mouse testis tissue using Coralite®555 Palladin antibody (CL555-10853) at dilution of 1:200.



Immunofluorescent analysis of (4% PFA) fixed mouse testis tissue using Coralite®555 Palladin antibody (CL555-10853) at dilution of 1:200.