

For Research Use Only

# CoraLite® Plus 488 Anti-Human CD28 Rabbit Recombinant Antibody



Catalog Number:CL488-98032

## Basic Information

Catalog Number:

CL488-98032

Size:

100tests , 5 µl/test

Source:

Rabbit

Isotype:

IgG

GenBank Accession Number:

BC093698

GeneID (NCBI):

940

ENSEMBL Gene ID:

ENSG00000178562

UNIPROT ID:

P10747

Full Name:

CD28 molecule

Calculated MW:

220 aa, 25 kDa

Purification Method:

Protein A purification

CloneNo.:

240354D2

Excitation/Emission maxima wavelengths:

493 nm / 522 nm

## Applications

Tested Applications:

FC

Species Specificity:

human

## Background Information

CD28 (T-cell-specific surface glycoprotein CD28), also known as T44 and Tp44, is a 44 kD disulfide-linked homodimeric type I glycoprotein (PMID: 2162180). It is a member of the immunoglobulin superfamily and is expressed on most T lineage cells, NK cell subsets, and plasma cells (PMID: 2162180, 8386518). CD28 may affect in vivo immune responses by functioning both as a cell adhesion molecule linking B and T lymphocytes and as the surface component of a novel signal transduction pathway (PMID: 2162180, 3021470). CD28 binds both CD80 and CD86 with a highly conserved motif MYPPY in the CDR3-like loop (PMID: 15696168, 7964482). CD28 is considered a major co-stimulatory molecule, inducing T lymphocyte activation and IL-2 synthesis, and preventing cell death (PMID: 1348520).

## Storage

Storage:

Store at 2-8°C. Avoid exposure to light.

Storage Buffer:

PBS with 0.09% sodium azide and 0.5% BSA.

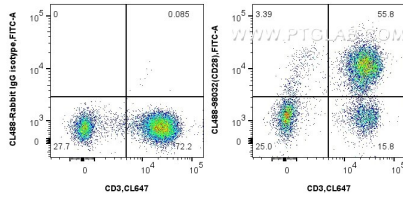
For technical support and original validation data for this product please contact:

T: 1 (888) 4PTGLAB (1-888-478-4522) (toll free in USA), or 1(312) 455-8498 (outside USA)

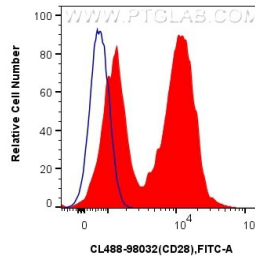
E: [proteintech@ptglab.com](mailto:proteintech@ptglab.com)  
W: [ptglab.com](http://ptglab.com)

This product is exclusively available under Proteintech Group brand and is not available to purchase from any other manufacturer.

## Selected Validation Data



1x10<sup>6</sup> human PBMCs were surface stained with CoraLite® Plus 647 Anti-Human CD3 and 5 ul CoraLite® Plus 488 Anti-Human CD28 Rabbit Recombinant Antibody (CL488-98032, Clone:240354D2), or Isotype Control. Cells were not fixed. Lymphocytes were gated.



1x10<sup>6</sup> human PBMCs were surface stained with 5 ul CoraLite® Plus 488 Anti-Human CD28 Rabbit Recombinant Antibody (CL488-98032, Clone:240354D2) (red), or Isotype Control (blue). Cells were not fixed. Lymphocytes were gated.