

For Research Use Only

# CoraLite® Plus 488 Anti-Mouse CD206 Rabbit Recombinant Antibody



Catalog Number: **CL488-98031**

## Basic Information

|                                       |   |   |
|---------------------------------------|---|---|
| <b>Catalog Number:</b><br>CL488-98031 | <b>GenBank Accession Number:</b><br>NM_008625.2 | <b>Purification Method:</b><br>Protein A purification                 |
| <b>Size:</b><br>100ug , 500 µg/ml     | <b>GeneID (NCBI):</b><br>17533                  | <b>CloneNo.:</b><br>240344D12   |
| <b>Source:</b><br>Rabbit              | <b>UNIPROT ID:</b><br>Q2HZ94                    | <b>Excitation/Emission maxima<br/>wavelengths:</b><br>493 nm / 522 nm |
| <b>Isotype:</b><br>IgG                | <b>Full Name:</b><br>mannose receptor, C type 1 |   |
|                                       | <b>Calculated MW:</b><br>165 kDa                |   |

## Applications

**Tested Applications:**  
FC

**Species Specificity:**  
mouse

## Background Information

CD206, also named as MMR, CLEC13D and MRC1, is a type I membrane receptor that mediates the endocytosis of glycoproteins by macrophages. CD206 has been shown to bind high-mannose structures on the surface of potentially pathogenic viruses, bacteria, and fungi so that they can be neutralized by phagocytic engulfment. CD206 is a 170 kDa transmembrane protein which contains 5 domains: an amino-terminal cysteine-rich region, a fibronectin type II repeat, a series of eight tandem lectin-like carbohydrate recognition domains (responsible for the recognition of mannose and fucose), a transmembrane domain, and an intracellular carboxy-terminal tail. It is expressed on most tissue macrophages, in vitro derived dendritic cells, lymphatic and sinusoidal endothelia.

## Storage

**Storage:**  
Store at 2-8°C. Avoid exposure to light.

**Storage Buffer:**  
PBS with 0.09% sodium azide.

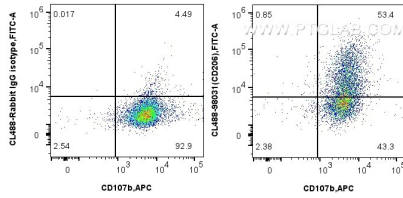
For technical support and original validation data for this product please contact:

T: 1 (888) 4PTGLAB (1-888-478-4522) (toll free  
in USA), or 1(312) 455-8498 (outside USA)

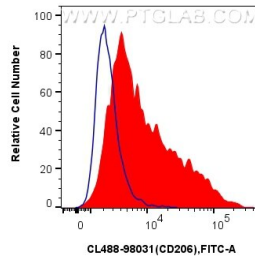
E: [proteintech@ptglab.com](mailto:proteintech@ptglab.com)  
W: [ptglab.com](http://ptglab.com)

**This product is exclusively available under Proteintech Group brand and is not available to purchase from any other manufacturer.**

## Selected Validation Data



$1 \times 10^6$  mouse peritoneal macrophages were surface stained with APC Anti-Mouse CD107b / LAMP2 and 0.25  $\mu$ g CoraLite® Plus 488 Anti-Mouse CD206 Rabbit Recombinant Antibody (CL488-98031, Clone:240344D12) or Isotype Control. Cells were incubated with FC Receptor Block prior to staining. Cells were not fixed.



$1 \times 10^6$  mouse peritoneal macrophages were surface stained with 0.25  $\mu$ g CoraLite® Plus 488 Anti-Mouse CD206 Rabbit Recombinant Antibody (CL488-98031, Clone:240344D12) (red) or Isotype Control (blue). Cells were incubated with FC Receptor Block prior to staining. Cells were not fixed.