

For Research Use Only

CoraLite® Plus 488-conjugated RAF1 Recombinant antibody

Catalog Number:CL488-84994-4



Basic Information

Catalog Number:

CL488-84994-4

Size:

100ul , Concentration: 1000 ug/ml by
Nanodrop;

Source:

Rabbit

Isotype:

IgG

Immunogen Catalog Number:

AG25423

GenBank Accession Number:

BC018119

GeneID (NCBI):

5894

UNIPROT ID:

P04049

Full Name:

v-raf-1 murine leukemia viral
oncogene homolog 1

Calculated MW:

648 aa, 73 kDa

Observed MW:

~75 kDa

Purification Method:

Protein A purification

CloneNo.:

242540A2

Recommended Dilutions:

IF/ICC: 1:50-1:500

**Excitation/Emission maxima
wavelengths:**

493 nm / 522 nm

Applications

Tested Applications:

IF/ICC

Species Specificity:

human, mouse, rat

Positive Controls:

IF/ICC : HEK-293 cells,

Background Information

Raf-1 proto-oncogene, serine/threonine kinase(RAF1), is a MAP kinase kinase kinase (MAP3K), which functions downstream of the Ras family of membrane associated GTPases to which it binds directly. RAF1 has two isoforms with MW of 73, 75 kDa. RAF1 plays an important role in the control of gene expression involved in the cell division cycle, apoptosis, cell differentiation and cell migration.

Storage

Storage:

Store at -20°C. Avoid exposure to light. Stable for one year after shipment.

Storage Buffer:

PBS with 50% glycerol, 0.05% Proclin300, 0.5% BSA, pH7.3

Aliquoting is unnecessary for -20°C storage

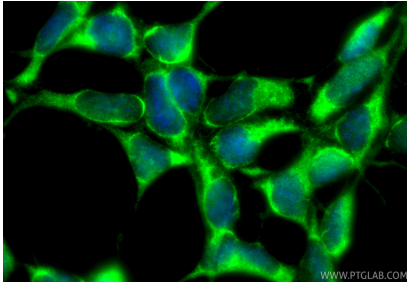
For technical support and original validation data for this product please contact:

T: 1 (888) 4PTGLAB (1-888-478-4522) (toll free
in USA), or 1(312) 455-8498 (outside USA)

E: proteintech@ptglab.com
W: ptglab.com

This product is exclusively available under Proteintech Group brand and is not available to purchase from any other manufacturer.

Selected Validation Data



Immunofluorescent analysis of (-20°C Ethanol) fixed HEK-293 cells using CoraLite® Plus 488 RAF1 antibody (CL488-84994-4, Clone: 242540A2) at dilution of 1:200.