

For Research Use Only

CoraLite® Plus 488-conjugated FEN1 Recombinant antibody

Catalog Number: CL488-84916-5



Basic Information

Catalog Number: CL488-84916-5	GenBank Accession Number: BC000323	Purification Method: Protein A purification
Size: 100ul , Concentration: 1000 ug/ml by Nanodrop;	GeneID (NCBI): 2237	CloneNo.: 242330C10
Source: Rabbit	UNIPROT ID: P39748	Recommended Dilutions: IF/ICC: 1:50-1:500
Isotype: IgG	Full Name: flap structure-specific endonuclease 1	Excitation/Emission maxima wavelengths: 493 nm / 522 nm
Immunogen Catalog Number: AG6552	Calculated MW: 43 kDa	

Applications

Tested Applications: IF/ICC	Positive Controls: IF/ICC : HeLa cells,
Species Specificity: human	

Background Information

FEN1(Flap endonuclease-1) is the prototypical member of the 5'-nuclease superfamily, whose activities span a range of cellular pathways involved in DNA replication and genome maintenance (PMID: 22118811, 21496641, 20929870). FEN1 is a structure-selective metallo-nuclease essential for Okazaki fragment maturation through efficient removal of 5' flaps resulting from strand displacement during lagging-strand synthesis (PMID: 8144677, 9081985). FEN1 is overexpressed in multiple cancer types, and has been suggested both as a biomarker relating to prognosis and disease progression and as a potential therapeutic target (PMID: 19010819, 16879693, 19596913, 27526030).

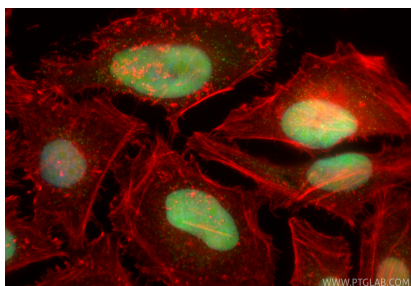
Storage

Storage:
Store at -20°C. Avoid exposure to light. Stable for one year after shipment.
Storage Buffer:
PBS with 50% glycerol, 0.05% Proclin300, 0.5% BSA, pH7.3
Aliquoting is unnecessary for -20°C storage

For technical support and original validation data for this product please contact:
T: 1 (888) 4PTGLAB (1-888-478-4522) (toll free in USA), or 1(312) 455-8498 (outside USA)
E: proteintech@ptglab.com
W: ptglab.com

This product is exclusively available under Proteintech Group brand and is not available to purchase from any other manufacturer.

Selected Validation Data



Immunofluorescent analysis of (4% PFA) fixed HeLa cells using CoraLite® Plus 488 FEN1 antibody (CL488-84916-5, Clone: 242330C10) at dilution of 1:200, CL594-Phalloidin (red).