

For Research Use Only

CoraLite® Plus 488-conjugated BCL3 Recombinant antibody

Catalog Number: CL488-84882-5



Basic Information

Catalog Number: CL488-84882-5	GenBank Accession Number: BC064993	Purification Method: Protein A purification
Size: 100ul , Concentration: 1000 ug/ml by Nanodrop;	GeneID (NCBI): 602	CloneNo.: 242233B11
Source: Rabbit	UNIPROT ID: P20749	Recommended Dilutions: IF/ICC: 1:50-1:500
Isotype: IgG	Full Name: B-cell CLL/lymphoma 3	Excitation/Emission maxima wavelengths: 493 nm / 522 nm
Immunogen Catalog Number: AG13375	Calculated MW: 446 aa, 47 kDa	
	Observed MW: 48-60 kDa	

Applications

Tested Applications: IF/ICC	Positive Controls: IF/ICC : HeLa cells,
Species Specificity: human, mouse	

Background Information

BCL3 (B-cell lymphoma 3 protein) has seven ankyrin repeat domains, a proline-rich N terminal domain and a serine- and proline-rich C-terminal domain (PMID: 31930327). BCL3 is an important contributor to chronic inflammatory disease states, such as osteoarthritis and rheumatoid arthritis (PMID: 12483727). BCL3 is a predominantly nuclear protein containing a trans-activation domain, and it can be recruited to NF- κ B-responsive promoters, resulting in transcriptional activation or repression depending on the subunit composition of NF- κ B complexes (PMID: 25089799, PMID: 30135206). BCL3 is known to be overexpressed in human breast cancers and is associated with reduced metastasis-free survival (PMID: 38255248).

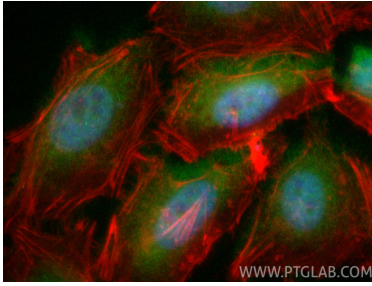
Storage

Storage:
Store at -20°C. Avoid exposure to light. Stable for one year after shipment.
Storage Buffer:
PBS with 50% glycerol, 0.05% Proclin300, 0.5% BSA, pH7.3
Aliquoting is unnecessary for -20°C storage

For technical support and original validation data for this product please contact:
T: 1 (888) 4PTGLAB (1-888-478-4522) (toll free in USA), or 1(312) 455-8498 (outside USA)
E: proteintech@ptglab.com
W: ptglab.com

This product is exclusively available under Proteintech Group brand and is not available to purchase from any other manufacturer.

Selected Validation Data



Immunofluorescent analysis of (4% PFA) fixed HeLa cells using CoraLite® Plus 488 BCL3 antibody (CL488-84882-5, Clone: 242233B11) at dilution of 1:200, CL594-Phalloidin (red).