

For Research Use Only

CoraLite® Plus 488-conjugated CD31 Recombinant antibody

Catalog Number: CL488-84607-4



Basic Information

Catalog Number:

CL488-84607-4

Size:

100ul , Concentration: 1000 ug/ml by
Nanodrop;

Source:

Rabbit

Isotype:

IgG

Immunogen Catalog Number:

EG0846

GenBank Accession Number:

NM_001305157.1

GeneID (NCBI):

18613

UNIPROT ID:

Q08481-1

Full Name:

platelet/endothelial cell adhesion
molecule 1

Calculated MW:

81 kDa

Observed MW:

100-130 kDa

Purification Method:

Protein A purification

CloneNo.:

242041E12

Recommended Dilutions:

IF/ICC: 1:250-1:1000

Excitation/Emission maxima
wavelengths:

493 nm / 522 nm

Applications

Tested Applications:

IF/ICC

Species Specificity:

mouse

Positive Controls:

IF/ICC : bEnd.3 cells,

Background Information

Platelet endothelial cell adhesion molecule-1 (PECAM-1, CD31) is a member of the immunoglobulin gene superfamily of cell adhesion molecules. CD31 is a transmembrane glycoprotein that is highly expressed on the surface of the endothelium, making up a large portion of its intracellular junctions. PECAM-1 is also present on the surface of hematopoietic cells and immune cells including platelets, monocytes, neutrophils, natural killer cells, megakaryocytes and some types of T-cell (PMID: 9011572). As well as its role in cell-cell adhesion, PECAM-1 functions as a signaling receptor, and is involved in important physiological events such as nitric oxide production, regulation of T-cell immunity and tolerance, leukocyte transendothelial migration and inflammation and angiogenesis (PMID: 21183735; 20978210; 17872453; 20634489).

Storage

Storage:

Store at -20°C. Avoid exposure to light. Stable for one year after shipment.

Storage Buffer:

PBS with 50% glycerol, 0.05% Proclin300, 0.5% BSA, pH7.3

Aliquoting is unnecessary for -20°C storage

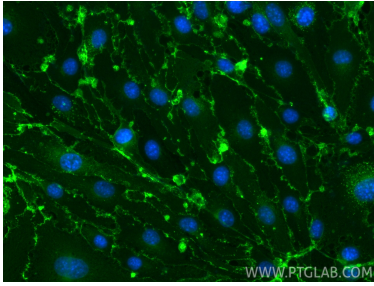
For technical support and original validation data for this product please contact:

T: 1 (888) 4PTGLAB (1-888-478-4522) (toll free
in USA), or 1(312) 455-8498 (outside USA)

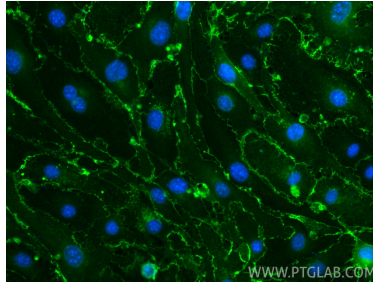
E: proteintech@ptglab.com
W: ptglab.com

This product is exclusively available under Proteintech Group brand and is not available to purchase from any other manufacturer.

Selected Validation Data



Immunofluorescent analysis of (-20°C Ethanol) fixed bEnd.3 cells using CoraLite® Plus 488 CD31 antibody (CL488-84607-4, Clone: 242041E12) at dilution of 1:500.



Immunofluorescent analysis of (-20°C Ethanol) fixed bEnd.3 cells using CoraLite® Plus 488 CD31 antibody (CL488-84607-4, Clone: 242041E12) at dilution of 1:1000.