

For Research Use Only

CoraLite® Plus 488-conjugated Integrin alpha-5 Recombinant antibody

Catalog Number:CL488-84468-4



Basic Information

Catalog Number: CL488-84468-4	GenBank Accession Number: BC008786	Purification Method: Protein A purification
Size: 100ul , Concentration: 1000 ug/ml by Nanodrop;	GeneID (NCBI): 3678	CloneNo.: 241685A3
Source: Rabbit	UNIPROT ID: P08648	Recommended Dilutions: IF/ICC 1:50-1:500
Isotype: IgG	Full Name: integrin, alpha 5 (fibronectin receptor, alpha polypeptide)	Excitation/Emission maxima wavelengths: 493 nm / 522 nm
	Calculated MW: 115 kDa	
	Observed MW: 140 kDa	

Applications

Tested Applications: IF/ICC	Positive Controls: IF/ICC : HeLa cells,
Species Specificity: human, mouse	

Background Information

Integrins are cell adhesion receptors that are heterodimers composed of non-covalently associated alpha and beta subunits. Integrin alpha 5 (ITGA5), belongs to the integrin alpha chain family, primarily binds to Integrin beta 1 (ITGB1) to form an $\alpha 5\beta 1$ heterodimer (PMID: 33711961). Integrin $\alpha 5\beta 1$ is a specific receptor of fibronectin through its arginine-glycine-aspartic acid (RGD) binding site (PMID: 19608542). Integrin $\alpha 5\beta 1$ plays roles in cell adhesion, migration and matrix formation, and has emerged as an essential mediator in many human carcinomas (PMID: 33408483).

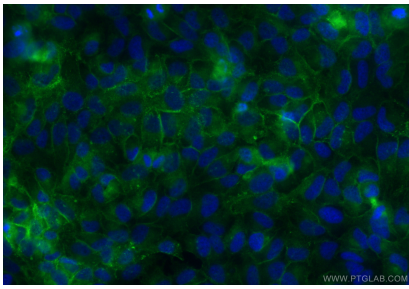
Storage

Storage:
Store at -20°C. Avoid exposure to light. Stable for one year after shipment.
Storage Buffer:
PBS with 50% Glycerol, 0.05% Proclin300, 0.5% BSA, pH 7.3.
Aliquoting is unnecessary for -20°C storage

For technical support and original validation data for this product please contact:
T: 1 (888) 4PTGLAB (1-888-478-4522) (toll free in USA), or 1(312) 455-8498 (outside USA)
E: proteintech@ptglab.com
W: ptglab.com

This product is exclusively available under Proteintech Group brand and is not available to purchase from any other manufacturer.

Selected Validation Data



Immunofluorescent analysis of (4% PFA) fixed HeLa cells using CoraLite® Plus 488 Integrin alpha-5 antibody (CL488-84468-4, Clone: 241685A3) at dilution of 1:200.