

For Research Use Only

CoraLite® Plus 488-conjugated PAX6 Recombinant antibody

Catalog Number: CL488-84345-5



Basic Information

Catalog Number: CL488-84345-5	GenBank Accession Number: BC011953	Purification Method: Protein A purification
Size: 100ul , Concentration: 1000 ug/ml by Nanodrop;	GeneID (NCBI): 5080	CloneNo.: 241521G1
Source: Rabbit	UNIPROT ID: P26367	Recommended Dilutions: IF-P 1:50-1:500
Isotype: IgG	Full Name: paired box 6	Excitation/Emission maxima wavelengths: 493 nm / 522 nm
Immunogen Catalog Number: AG2984	Calculated MW: 47 kDa	
	Observed MW: 47 kDa	

Applications

Tested Applications: IF-P	Positive Controls: IF-P : mouse eye tissue,
Species Specificity: human, mouse	

Background Information

PAX6, a paired domain and homeodomain-containing transcription factor. Interaction with TRIM11 leads to ubiquitination of PAX6 and its proteasomal degradation. PAX6 is one of the earliest genes expressed in the eye field and considered a master control gene for retinal and eye development. PAX6 also regulates the development of the olfactory, central nervous systems, pituitary, and pancreas. PAX6 mutations can cause complex ocular disorders such as aniridia and Peter's anomaly.

Storage

Storage:
Store at -20°C. Avoid exposure to light. Stable for one year after shipment.
Storage Buffer:
PBS with 50% Glycerol, 0.05% Proclin300, 0.5% BSA, pH 7.3.
Aliquoting is unnecessary for -20°C storage

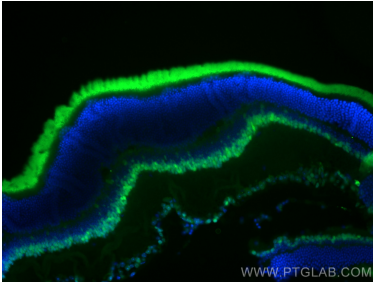
For technical support and original validation data for this product please contact:

T: 1 (888) 4PTGLAB (1-888-478-4522) (toll free
in USA), or 1(312) 455-8498 (outside USA)

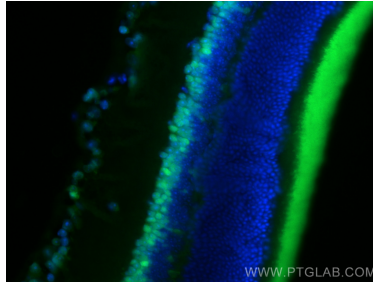
E: proteintech@ptglab.com
W: ptglab.com

This product is exclusively available under Proteintech Group brand and is not available to purchase from any other manufacturer.

Selected Validation Data



Immunofluorescent analysis of (4% PFA) fixed paraffin-embedded mouse eye tissue using CoraLite® Plus 488 PAX6 antibody (CL488-84345-5, Clone: 241521G1) at dilution of 1:200. Heat mediated antigen retrieval with Tris-EDTA buffer (pH 9.0).



Immunofluorescent analysis of (4% PFA) fixed paraffin-embedded mouse eye tissue using CoraLite® Plus 488 PAX6 antibody (CL488-84345-5, Clone: 241521G1) at dilution of 1:200. Heat mediated antigen retrieval with Tris-EDTA buffer (pH 9.0).