

For Research Use Only

CoraLite® Plus 488-conjugated POTEA-Specific Recombinant antibody

Catalog Number:CL488-84298



Basic Information

Catalog Number:
CL488-84298

Size:
100ul , Concentration: 1000 µg/ml by
Nanodrop;

Source:
Rabbit

Isotype:
IgG

GenBank Accession Number:
NM_001002920

GeneID (NCBI):
340441

UNIPROT ID:
Q658J7

Full Name:
POTE ankyrin domain family,
member A

Calculated MW:
56 kDa

Purification Method:
Protein A purification

CloneNo.:
241187F7

Excitation/Emission maxima
wavelengths:
493 nm / 522 nm

Applications

Tested Applications:
FC (Intra)

Species Specificity:
human

Background Information

POTEa, also named A26A1 and POTE8, belongs to the POTE family. POTE has an important signaling function in the reproductive system.

Storage

Storage:
Store at -20°C. Avoid exposure to light. Stable for one year after shipment.

Storage Buffer:
PBS with 50% Glycerol, 0.05% Proclin300, 0.5% BSA, pH 7.3.

Aliquoting is unnecessary for -20°C storage

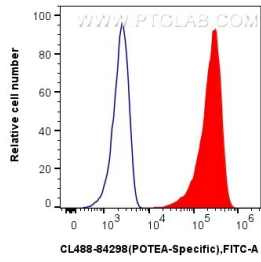
For technical support and original validation data for this product please contact:

T: 1 (888) 4PTGLAB (1-888-478-4522) (toll free
in USA), or 1(312) 455-8498 (outside USA)

E: proteintech@ptglab.com
W: ptglab.com

This product is exclusively available under Proteintech Group brand and is not available to purchase from any other manufacturer.

Selected Validation Data



1×10^6 HeLa cells were intracellularly stained with 0.25 μ g Coralite® Plus 488 POTE-Specific Recombinant Antibody (CL488-84298, Clone:241187F7)(red), or 0.25 μ g Rabbit IgG Isotype Control Recombinant Antibody (98136-1-RR, Clone: 240953C9) (blue). Cells were fixed with 4% PFA and permeabilized with Intracellular Staining Permeabilization Wash Buffer.