

For Research Use Only

# CoraLite® Plus 488-conjugated AP2S1 Recombinant antibody

Catalog Number: CL488-84174-3



## Basic Information

<b>Catalog Number:</b> CL488-84174-3	<b>GenBank Accession Number:</b> BC006337	<b>Purification Method:</b> Protein A purification
<b>Size:</b> 100ul , Concentration: 1000 ug/ml by Nanodrop;	<b>GeneID (NCBI):</b> 1175	<b>CloneNo.:</b> 241369F1
<b>Source:</b> Rabbit	<b>UNIPROT ID:</b> P53680	<b>Recommended Dilutions:</b> IF/ICC 1:50-1:500
<b>Isotype:</b> IgG	<b>Full Name:</b> adaptor-related protein complex 2, sigma 1 subunit	<b>Excitation/Emission maxima wavelengths:</b> 493 nm / 522 nm
<b>Immunogen Catalog Number:</b> AG8095	<b>Calculated MW:</b> 142 aa, 17 kDa	
	<b>Observed MW:</b> 15-17 kDa	

## Applications

<b>Tested Applications:</b> IF/ICC	<b>Positive Controls:</b> IF/ICC : HeLa cells,
<b>Species Specificity:</b> human, mouse, rat	

## Background Information

AP2S1 is a component of the adaptor protein complex 2 (AP-2). AP complexes are cytosolic heterotetramers that mediate the sorting of membrane proteins in the secretory and endocytic pathways. AP complexes form clathrin-coated vesicles (CCVs) by recruiting the scaffold protein, clathrin. AP complexes also play a pivotal role in cargo selection by recognizing the sorting signals within the cytoplasmic tail of integral membrane proteins. AP-2 is composed of two large adaptins (alpha-type subunit AP2A1 or AP2A2 and beta-type subunit AP2B1), a medium adaptin (mu-type subunit AP2M1), and a small adaptin (sigma-type subunit AP2S1). It works on the plasma membrane to internalize cargo in clathrin-mediated endocytosis. Missense mutations of AP2S1 affect Arg15 and lead to familial hypocalciuric hypercalcemia type 3 (FHH3), an extracellular calcium homeostasis disorder affecting the parathyroids, kidneys, and bone (PMID: 23222959).

## Storage

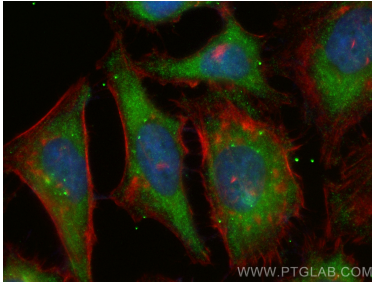
**Storage:**  
Store at -20°C. Avoid exposure to light. Stable for one year after shipment.  
**Storage Buffer:**  
PBS with 50% Glycerol, 0.05% Proclin300, 0.5% BSA, pH 7.3.  
**Aliquoting is unnecessary for -20°C storage**

For technical support and original validation data for this product please contact:  
T: 1 (888) 4PTGLAB (1-888-478-4522) (toll free in USA), or 1(312) 455-8498 (outside USA)  
E: [proteintech@ptglab.com](mailto:proteintech@ptglab.com)  
W: [ptglab.com](http://ptglab.com)

This product is exclusively available under Proteintech Group brand and is not available to purchase from any other manufacturer.

---

## Selected Validation Data



Immunofluorescent analysis of (-20°C Ethanol) fixed HeLa cells using CoraLite® Plus 488 AP2S1 antibody (CL488-84174-3, Clone: 241369F1 ) at dilution of 1:200, CL594-Phalloidin (red).