

For Research Use Only

CoraLite® Plus 488-conjugated EIF3F Recombinant antibody

Catalog Number:CL488-84131-2



Basic Information

Catalog Number:

CL488-84131-2

Size:

100ul , Concentration: 1000 ug/ml by
Nanodrop;

Source:

Rabbit

Isotype:

IgG

Immunogen Catalog Number:

AG34849

GenBank Accession Number:

BC000490

GeneID (NCBI):

8665

UNIPROT ID:

O00303

Full Name:

eukaryotic translation initiation
factor 3, subunit F

Calculated MW:

38 kDa

Observed MW:

40-45 kDa

Purification Method:

Protein A purification

CloneNo.:

240894D2

Recommended Dilutions:

IF/ICC 1:50-1:500

**Excitation/Emission maxima
wavelengths:**

493 nm / 522 nm

Applications

Tested Applications:

IF/ICC, FC (Intra)

Species Specificity:

human

Positive Controls:

IF/ICC : HeLa cells,

Background Information

EIF3F (eukaryotic translation initiation factor 3 subunit F) is a protein that plays an important role in eukaryotic cells and is an integral part of the translation initiation factor 3(Eif3) complex. EIF3 is a complex of at least 10 distinct subunits and is the largest translation initiation factor in eukaryotes.

Storage

Storage:

Store at -20°C. Avoid exposure to light. Stable for one year after shipment.

Storage Buffer:

PBS with 50% Glycerol, 0.05% Proclin300, 0.5% BSA, pH 7.3.

Aliquoting is unnecessary for -20°C storage

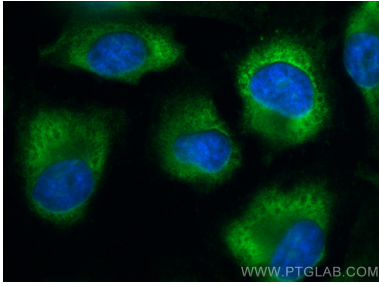
For technical support and original validation data for this product please contact:

T: 1 (888) 4PTGLAB (1-888-478-4522) (toll free
in USA), or 1(312) 455-8498 (outside USA)

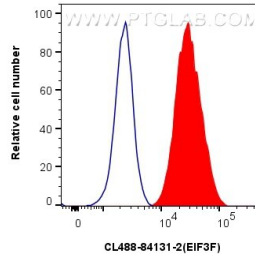
E: proteintech@ptglab.com
W: ptglab.com

This product is exclusively available under Proteintech Group brand and is not available to purchase from any other manufacturer.

Selected Validation Data



Immunofluorescent analysis of (-20°C Ethanol) fixed HeLa cells using CoraLite® Plus 488 EIF3F antibody (CL488-84131-2, Clone: 240894D2) at dilution of 1:200.



1x10⁶ U2OS cells were intracellularly stained with 0.25 ug CoraLite® Plus 488 Eif3f Recombinant Antibody (CL488-84131-2, Clone:240894D2)(red), or 0.25 ug CoraLite® Plus 488 Rabbit IgG Isotype Control Recombinant Antibody (CL488-98136, Clone: 240953C9) (blue). Cells were fixed with 4% PFA and permeabilized with Flow Cytometry Perm Buffer (PF00011-C).