

For Research Use Only

CoraLite® Plus 488-conjugated KLK3/PSA Recombinant antibody

Catalog Number: CL488-84059-5



Basic Information

Catalog Number:

CL488-84059-5

Size:

100ul , Concentration: 1000 µg/ml by 354

Nanodrop;

Source:

Rabbit

Isotype:

IgG

GenBank Accession Number:

NM_001648.2

GeneID (NCBI):

354

UNIPROT ID:

P07288-1

Full Name:

kallikrein-related peptidase 3

Calculated MW:

29 kDa

Observed MW:

30-34 kDa

Purification Method:

Protein A purification

CloneNo.:

241263F8

Recommended Dilutions:

IF/ICC 1:50-1:500

Excitation/Emission maxima

wavelengths:

493 nm / 522 nm

Applications

Tested Applications:

IF/ICC, FC (Intra)

Species Specificity:

human

Positive Controls:

IF/ICC : LNCaP cells,

Background Information

Kallikreins are a subgroup of serine proteases having diverse physiological functions. Growing evidence suggests that many kallikreins are implicated in carcinogenesis and some have potential as novel cancer and other disease biomarkers. kallikrein-related peptidase 3, which is also called PSA (prostate-specific antigen) in the clinical setting, is useful in the diagnosis and monitoring of prostatic carcinoma. KLK3 has 5 isoforms produced by alternative splicing.

Storage

Storage:

Store at -20°C. Avoid exposure to light. Stable for one year after shipment.

Storage Buffer:

PBS with 50% Glycerol, 0.05% Proclin300, 0.5% BSA, pH 7.3.

Aliquoting is unnecessary for -20°C storage

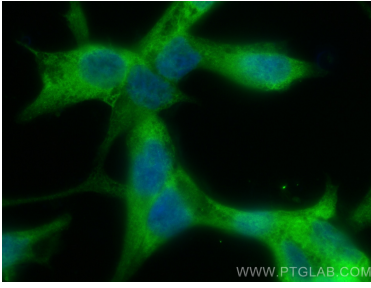
For technical support and original validation data for this product please contact:

T: 1 (888) 4PTGLAB (1-888-478-4522) (toll free
in USA), or 1(312) 455-8498 (outside USA)

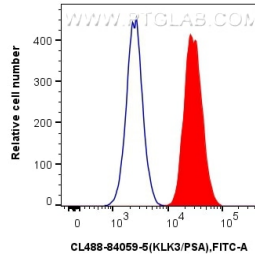
E: proteintech@ptglab.com
W: ptglab.com

This product is exclusively available under Proteintech Group brand and is not available to purchase from any other manufacturer.

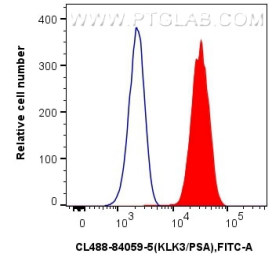
Selected Validation Data



Immunofluorescent analysis of (4% PFA) fixed LNCaP cells using CoraLite® Plus 488 KLK3/PSA antibody (CL488-84059-5, Clone: 241263F8) at dilution of 1:200.



1x10⁶ PC-3 cells were intracellularly stained with 0.25 ug CoraLite® Plus 488-conjugated KLK3/PSA Recombinant antibody (CL488-84059-5, Clone:241263F8)(red), or 0.25 ug CoraLite® Plus 488 Rabbit IgG Isotype Control Recombinant Antibody (CL488-98136, Clone: 240953C9) (blue). Cells were fixed and permeabilized with Transcription Factor Staining Buffer Kit (PF00011).



1x10⁶ HeLa cells were intracellularly stained with 0.25 ug CoraLite® Plus 488-conjugated KLK3/PSA Recombinant antibody (CL488-84059-5, Clone:241263F8)(red), or 0.25 ug CoraLite® Plus 488 Rabbit IgG Isotype Control Recombinant Antibody (CL488-98136, Clone: 240953C9) (blue). Cells were fixed and permeabilized with Transcription Factor Staining Buffer Kit (PF00011).