

For Research Use Only

CoraLite® Plus 488-conjugated CASQ2 Recombinant antibody

Catalog Number: CL488-84056-6



Basic Information

Catalog Number: CL488-84056-6	GenBank Accession Number: BC022288	Purification Method: Protein A purification
Size: 100ul , Concentration: 1000 µg/ml by Nanodrop;	GeneID (NCBI): 845	CloneNo.: 241211A3
Source: Rabbit	UNIPROT ID: O14958	Recommended Dilutions: IF/ICC 1:50-1:500
Isotype: IgG	Full Name: calsequestrin 2 (cardiac muscle)	Excitation/Emission maxima wavelengths: 493 nm / 522 nm
Immunogen Catalog Number: AG33584	Calculated MW: 46 kDa	
	Observed MW: 46-55 kDa	

Applications

Tested Applications: IF/ICC, FC (Intra)	Positive Controls: IF/ICC : C2C12 cells,
Species Specificity: human, mouse, rat, pig	

Background Information

Calsequestrin (CASQ) is a Ca²⁺-binding protein present primarily in junctional sarcoplasmic reticulum of skeletal and cardiac muscle; the cardiac form (CASQ2) is encoded by a separate gene. The primary role of CASQ2 is buffering of the sarcoplasmic reticulum Ca²⁺ ions, but another role for CASQ2 has emerged recently: CASQ2 regulates the open probability of ryanodine receptor 2 (RyR2). Mutations in CASQ2 cause stress-induced polymorphic ventricular tachycardia, also referred to as catecholaminergic polymorphic ventricular tachycardia 2 (CPVT2), a disease characterized by bidirectional ventricular tachycardia that may lead to cardiac arrest.

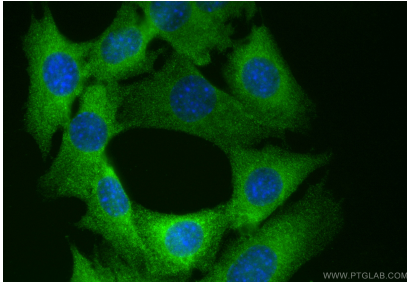
Storage

Storage:
Store at -20°C. Avoid exposure to light. Stable for one year after shipment.
Storage Buffer:
PBS with 50% Glycerol, 0.05% Proclin300, 0.5% BSA, pH 7.3.
Aliquoting is unnecessary for -20°C storage

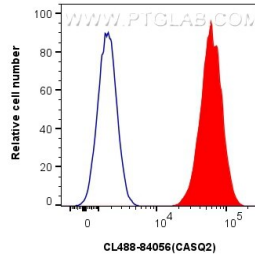
For technical support and original validation data for this product please contact:
T: 1 (888) 4PTGLAB (1-888-478-4522) (toll free in USA), or 1(312) 455-8498 (outside USA)
E: proteintech@ptglab.com
W: ptglab.com

This product is exclusively available under Proteintech Group brand and is not available to purchase from any other manufacturer.

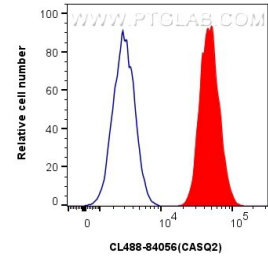
Selected Validation Data



Immunofluorescent analysis of (4% PFA) fixed C2C12 cells using Coralite® Plus 488 CASQ2 antibody (CL488-84056-6, Clone: 241211A3) at dilution of 1:200.



1x10⁶ U2OS cells were intracellularly stained with 0.25 ug Coralite® Plus 488 Casq2 Recombinant Antibody (CL488-84056-6, Clone:241211A3)(red), or 0.25 ug Coralite® Plus 488 Rabbit IgG Isotype Control Recombinant Antibody (CL488-98136, Clone: 240953C9) (blue). Cells were fixed with 4% PFA and permeabilized with Flow Cytometry Perm Buffer (PF00011-C).



1x10⁶ A549 cells were intracellularly stained with 0.25 ug Coralite® Plus 488 Casq2 Recombinant Antibody (CL488-84056-6, Clone:241211A3)(red), or 0.25 ug Coralite® Plus 488 Rabbit IgG Isotype Control Recombinant Antibody (CL488-98136, Clone: 240953C9) (blue). Cells were fixed with 4% PFA and permeabilized with Flow Cytometry Perm Buffer (PF00011-C).