

For Research Use Only

CoraLite® Plus 488-conjugated RREB1-Specific Recombinant antibody

Catalog Number: CL488-84048



Basic Information

Catalog Number:

CL488-84048

Size:

100ul , Concentration: 1000 ug/ml by Nanodrop;

Source:

Rabbit

Isotype:

IgG

GenBank Accession Number:

NM_001003698

GeneID (NCBI):

6239

UNIPROT ID:

Q92766

Full Name:

ras responsive element binding protein 1

Calculated MW:

181 kDa

Observed MW:

260 kDa

Purification Method:

Protein A purification

CloneNo.:

240800B7

Recommended Dilutions:

IF/ICC 1:50-1:500

Excitation/Emission maxima wavelengths:

493 nm / 522 nm

Applications

Tested Applications:

IF/ICC

Species Specificity:

human

Positive Controls:

IF/ICC : HeLa cells,

Background Information

RREB1, also named as FINB and Zep-1, belongs to the krueppel C2H2-type zinc-finger protein family. RREB1 is a transcription factor that binds specifically to the RAS-responsive elements (RRE) of gene promoters. It may be involved in Ras/Raf-mediated cell differentiation by enhancing calcitonin expression. RREB1 represses the angiotensinogen gene. RREB1 can induce expression of p53 and repress p16 which associated with the expression of tumour. It has been reported that the RREB1 can be a candidate gene for type 2 diabetes associated end-stage kidney disease. To some extent, the decrease of zinc in human pancreatic adenocarcinoma is associated with the downregulation of RREB1. RREB1 has some isoforms with 250 kDa, 180-200 kDa and 140-160 kDa protein. (PMID: 21703425, 15067362, 25050557, 25027322)

Storage

Storage:

Store at -20°C. Avoid exposure to light. Stable for one year after shipment.

Storage Buffer:

PBS with 50% Glycerol, 0.05% Proclin300, 0.5% BSA, pH 7.3.

Aliquoting is unnecessary for -20°C storage

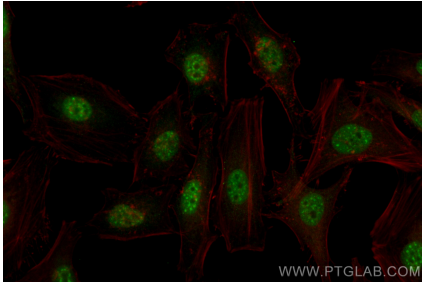
For technical support and original validation data for this product please contact:

T: 1 (888) 4PTGLAB (1-888-478-4522) (toll free in USA), or 1(312) 455-8498 (outside USA)

E: proteintech@ptglab.com
W: ptglab.com

This product is exclusively available under Proteintech Group brand and is not available to purchase from any other manufacturer.

Selected Validation Data



Immunofluorescent analysis of (4% PFA) fixed HeLa cells using CoraLite® Plus 488 RREB1-Specific antibody (CL488-84048, Clone: 240800B7) at dilution of 1:200.