

For Research Use Only

# CoraLite® Plus 488-conjugated HINT2 Recombinant antibody

Catalog Number:CL488-84031-5



## Basic Information

**Catalog Number:**

CL488-84031-5

**Size:**

100ul , Concentration: 1000 ug/ml by  
Nanodrop;

**Source:**

Rabbit

**Isotype:**

IgG

**Immunogen Catalog Number:**

AG12413

**GenBank Accession Number:**

BC047737

**GeneID (NCBI):**

84681

**UNIPROT ID:**

Q9BX68

**Full Name:**

histidine triad nucleotide binding  
protein 2

**Calculated MW:**

163 aa, 17 kDa

**Observed MW:**

14 kDa

**Purification Method:**

Protein A purification

**CloneNo.:**

241150D10

**Recommended Dilutions:**

IF/ICC 1:50-1:500

**Excitation/Emission maxima  
wavelengths:**

493 nm / 522 nm

## Applications

**Tested Applications:**

IF/ICC

**Species Specificity:**

human, mouse, rat

**Positive Controls:**

IF/ICC : HeLa cells,

## Storage

**Storage:**

Store at -20°C. Avoid exposure to light. Stable for one year after shipment.

**Storage Buffer:**

PBS with 50% Glycerol, 0.05% Proclin300, 0.5% BSA, pH 7.3.

Aliquoting is unnecessary for -20°C storage

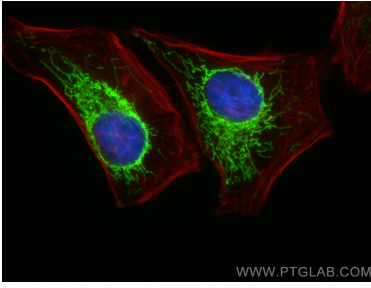
For technical support and original validation data for this product please contact:

T: 1 (888) 4PTGLAB (1-888-478-4522) (toll free  
in USA), or 1(312) 455-8498 (outside USA)

E: [proteintech@ptglab.com](mailto:proteintech@ptglab.com)  
W: [ptglab.com](http://ptglab.com)

**This product is exclusively available under Proteintech  
Group brand and is not available to purchase from any  
other manufacturer.**

## Selected Validation Data



Immunofluorescent analysis of (4% PFA) fixed HeLa cells using CoraLite® Plus 488 HINT2 antibody (CL488-84031-5, Clone: 241150D10) at dilution of 1:200, CL594-phalloidin (red).