

For Research Use Only

# CoraLite® Plus 488-conjugated FOXF1 Recombinant antibody

Catalog Number:CL488-84020-3



## Basic Information

**Catalog Number:**

CL488-84020-3

**Size:**

100ul , Concentration: 1000 ug/ml by  
Nanodrop;

**Source:**

Rabbit

**Isotype:**

IgG

**Immunogen Catalog Number:**

AG34266

**GenBank Accession Number:**

NP\_001442

**GeneID (NCBI):**

2294

**UNIPROT ID:**

Q12946

**Full Name:**

forkhead box F1

**Calculated MW:**

40 kDa

**Observed MW:**

40 kDa

**Purification Method:**

Protein A purification

**CloneNo.:**

241076C8

**Recommended Dilutions:**

IF/ICC 1:50-1:500

**Excitation/Emission maxima  
wavelengths:**

493 nm / 522 nm

## Applications

**Tested Applications:**

IF/ICC, FC (Intra)

**Species Specificity:**

human

**Positive Controls:**

IF/ICC : HeLa cells,

## Background Information

FOXF1 (Forkhead box protein F1), also known as FKHL5, It is expected to be located in the nucleus, which is expressed predominantly in lung and placenta. FOXF1, a member of the Forkhead box family of transcription factors, as one of the most highly and consistently upregulated genes in FP-RMS. While it is known that FOXF1 is required for mesodermal differentiation toward endothelial and smooth muscle cell lineages, FOXF1 is not expressed in differentiated skeletal muscle cells, and its role in fusion-positive FP-RMS remains unknown (PMID: 33627785). The molecular weight of FOXF1 is 40 kDa.

## Storage

**Storage:**

Store at -20°C. Avoid exposure to light. Stable for one year after shipment.

**Storage Buffer:**

PBS with 50% Glycerol, 0.05% Proclin300, 0.5% BSA, pH 7.3.

Aliquoting is unnecessary for -20°C storage

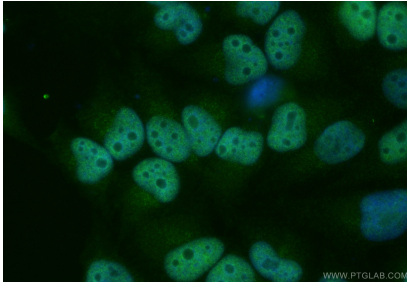
For technical support and original validation data for this product please contact:

T: 1 (888) 4PTGLAB (1-888-478-4522) (toll free  
in USA), or 1(312) 455-8498 (outside USA)

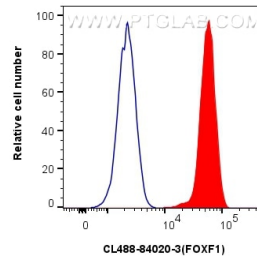
E: [proteintech@ptglab.com](mailto:proteintech@ptglab.com)  
W: [ptglab.com](http://ptglab.com)

**This product is exclusively available under Proteintech Group brand and is not available to purchase from any other manufacturer.**

## Selected Validation Data



Immunofluorescent analysis of (4% PFA) fixed HeLa cells using Coralite® Plus 488 FOXF1 antibody (CL488-84020-3, Clone: 241076C8) at dilution of 1:200.



1x10<sup>6</sup> HeLa cells were intracellularly stained with 0.25 ug Coralite® Plus 488 Foxf1 Recombinant Antibody (CL488-84020-3, Clone:241076C8)(red), or 0.25 ug Coralite® Plus 488 Rabbit IgG Isotype Control Recombinant Antibody (CL488-98136, Clone: 240953C9) (blue). Cells were fixed and permeabilized with Transcription Factor Staining Buffer Kit (PF00011).