

For Research Use Only

CoraLite® Plus 488-conjugated SP100 Recombinant antibody

Catalog Number:CL488-84012-5



Basic Information

Catalog Number: CL488-84012-5	GenBank Accession Number: BC011562	Purification Method: Protein A purification
Size: 100ul , Concentration: 1000 ug/ml by Nanodrop;	GeneID (NCBI): 6672	CloneNo.: 241153F8
Source: Rabbit	UNIPROT ID: P23497	Recommended Dilutions: IF/ICC: 1:50-1:500
Isotype: IgG	Full Name: SP100 nuclear antigen	Excitation/Emission maxima wavelengths: 493 nm / 522 nm
Immunogen Catalog Number: AG35193	Calculated MW: 879 aa, 100 kDa	
	Observed MW: 70-100 kDa, 110-140 kDa	

Applications

Tested Applications: IF/ICC	Positive Controls: IF/ICC : A431 cells,
Species Specificity: human	

Background Information

SP100 nuclear antigen, belongs to the nuclear bodies(NBs), has a role in the control of gene expression. It contains a HSR domain, which is important for the nuclear body targeting as well as for the dimerization, and one PxVxL motif, which if required for interaction with chromoshadow domains. Sp100 is an acidic protein that exerts a highly aberrant electrophoretic mobility in SDS-polyacrylamide gel electrophoresis.

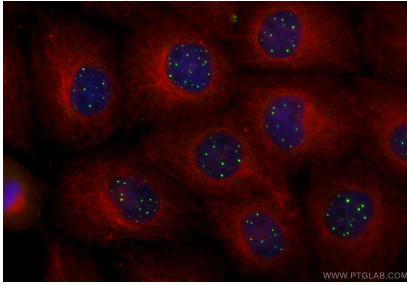
Storage

Storage:
Store at -20°C. Avoid exposure to light. Stable for one year after shipment.
Storage Buffer:
PBS with 50% glycerol, 0.05% Proclin300, 0.5% BSA, pH7.3
Aliquoting is unnecessary for -20°C storage

For technical support and original validation data for this product please contact:
T: 1 (888) 4PTGLAB (1-888-478-4522) (toll free in USA), or 1(312) 455-8498 (outside USA)
E: proteintech@ptglab.com
W: ptglab.com

This product is exclusively available under Proteintech Group brand and is not available to purchase from any other manufacturer.

Selected Validation Data



Immunofluorescent analysis of (4% PFA) fixed A431 cells using CoraLite® Plus 488 SP100 antibody (CL488-84012-5, Clone: 241153F8) at dilution of 1:200, Alpha Tubulin antibody (66031-1-Ig, Clone: 1E4C11, red).