

For Research Use Only

# CoraLite® Plus 488-conjugated TOB1 Recombinant antibody

Catalog Number:CL488-83944-2



## Basic Information

<b>Catalog Number:</b> CL488-83944-2	<b>GenBank Accession Number:</b> BC031406	<b>Purification Method:</b> Protein A purification
<b>Size:</b> 100ul , Concentration: 1000 ug/ml by Nanodrop;	<b>GeneID (NCBI):</b> 10140	<b>CloneNo.:</b> 241043A9
<b>Source:</b> Rabbit	<b>UNIPROT ID:</b> P50616	<b>Recommended Dilutions:</b> IF/ICC 1:50-1:500
<b>Isotype:</b> IgG	<b>Full Name:</b> transducer of ERBB2, 1	<b>Excitation/Emission maxima wavelengths:</b> 493 nm / 522 nm
<b>Immunogen Catalog Number:</b> AG6714	<b>Calculated MW:</b> 38 kDa	

## Applications

<b>Tested Applications:</b> IF/ICC	<b>Positive Controls:</b> IF/ICC : HeLa cells,
<b>Species Specificity:</b> human	

## Background Information

TOB1, also known as APRO6 or TROB1, is a member of the transducer of erbB-2/B-cell translocation gene protein family. Members of this family are anti-proliferative factors that have the potential to regulate cell growth. The TOB1 protein has a large additional C-terminal region, which contains PAM2 motifs that mediate interactions with poly(A)-binding proteins. It is mainly located in the cell nucleus and will transfer between the cell nucleus and the cytoplasm. The more phosphorylation, the more obvious the cytoplasmic localization.

## Storage

**Storage:**  
Store at -20°C. Avoid exposure to light. Stable for one year after shipment.  
**Storage Buffer:**  
PBS with 50% Glycerol, 0.05% Proclin300, 0.5% BSA, pH 7.3.  
Aliquoting is unnecessary for -20°C storage

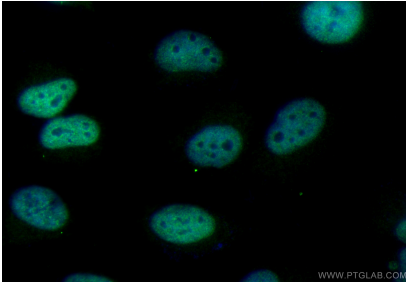
For technical support and original validation data for this product please contact:

T: 1 (888) 4PTGLAB (1-888-478-4522) (toll free  
in USA), or 1(312) 455-8498 (outside USA)

E: [proteintech@ptglab.com](mailto:proteintech@ptglab.com)  
W: [ptglab.com](http://ptglab.com)

**This product is exclusively available under Proteintech  
Group brand and is not available to purchase from any  
other manufacturer.**

## Selected Validation Data



Immunofluorescent analysis of (4% PFA) fixed HeLa cells using CoraLite® Plus 488 TOB1 antibody (CL488-83944-2, Clone: 241043A9) at dilution of 1:200.