

For Research Use Only

# CoraLite® Plus 488-conjugated NEU2 Recombinant antibody

Catalog Number:CL488-83934-2



## Basic Information

<b>Catalog Number:</b> CL488-83934-2	<b>GenBank Accession Number:</b> BC107053	<b>Purification Method:</b> Protein A purification
<b>Size:</b> 100ul , Concentration: 1000 ug/ml by Nanodrop;	<b>GeneID (NCBI):</b> 4759	<b>CloneNo.:</b> 240685C12
<b>Source:</b> Rabbit	<b>UNIPROT ID:</b> Q9Y3R4	<b>Recommended Dilutions:</b> IF/ICC 1:50-1:500
<b>Isotype:</b> IgG	<b>Full Name:</b> sialidase 2 (cytosolic sialidase)	<b>Excitation/Emission maxima wavelengths:</b> 493 nm / 522 nm
<b>Immunogen Catalog Number:</b> AG17386	<b>Calculated MW:</b> 380 aa, 42 kDa	

## Applications

<b>Tested Applications:</b> IF/ICC	<b>Positive Controls:</b> IF/ICC : PC-12 cells,
<b>Species Specificity:</b> human	

## Background Information

NEU2, also named as Sialidase 2, neuraminidase 2, catalyzes the hydrolytic cleavage of the terminal sialic acid (N-acetylneuraminic acid, Neu5Ac) of a glycan moiety in the catabolism of glycolipids, glycoproteins and oligosaccharides. NEU2 is localized in the cytosol and plasma membrane and takes part in myoblast and neuronal differentiation. It is almost undetectable under normal physiological conditions, and was found to be involved into apoptotic events in pancreatic ductal adenocarcinoma, one of the most dangerous cancers due to poor diagnosis and prognosis. (PMID: 30439363)

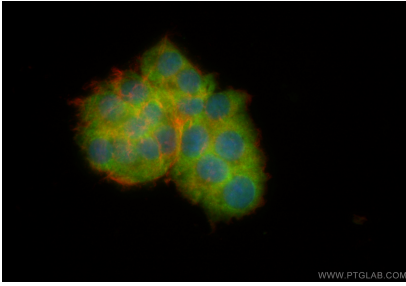
## Storage

**Storage:**  
Store at -20°C. Avoid exposure to light. Stable for one year after shipment.  
**Storage Buffer:**  
PBS with 50% Glycerol, 0.05% Proclin300, 0.5% BSA, pH 7.3.  
Aliquoting is unnecessary for -20°C storage

For technical support and original validation data for this product please contact:  
T: 1 (888) 4PTGLAB (1-888-478-4522) (toll free in USA), or 1(312) 455-8498 (outside USA)  
E: [proteintech@ptglab.com](mailto:proteintech@ptglab.com)  
W: [ptglab.com](http://ptglab.com)

This product is exclusively available under Proteintech Group brand and is not available to purchase from any other manufacturer.

## Selected Validation Data



Immunofluorescent analysis of (4% PFA) fixed PC-12 cells using CoraLite® Plus 488 NEU2 antibody (CL488-83934-2, Clone: 240685C12) at dilution of 1:200, CL594-Phalloidin (red).