

For Research Use Only

# CoraLite® Plus 488-conjugated FIP1L1 Recombinant antibody

Catalog Number:CL488-83863-3



## Basic Information

<b>Catalog Number:</b> CL488-83863-3	<b>GenBank Accession Number:</b> BC017724	<b>Purification Method:</b> Protein A purification
<b>Size:</b> 100ul , Concentration: 1000 µg/ml by Nanodrop;	<b>GeneID (NCBI):</b> 81608	<b>CloneNo.:</b> 240658A8
<b>Source:</b> Rabbit	<b>UNIPROT ID:</b> Q6UN15	<b>Recommended Dilutions:</b> IF/ICC 1:50-1:500
<b>Isotype:</b> IgG	<b>Full Name:</b> FIP1 like 1 (S. cerevisiae)	<b>Excitation/Emission maxima wavelengths:</b> 493 nm / 522 nm
<b>Immunogen Catalog Number:</b> AG2921	<b>Calculated MW:</b> 594 aa, 66 kDa	

## Applications

<b>Tested Applications:</b> IF/ICC	<b>Positive Controls:</b> IF/ICC : MCF-7 cells,
<b>Species Specificity:</b> human	

## Background Information

FIP1L1, also known as FIP1, encodes a subunit of the CPSF (cleavage and polyadenylation specificity factor) complex that polyadenylates the 3' end of mRNA precursors. The FIP1L1-PDGFR fusion gene encodes a constitutively activated tyrosine kinase that links the first 233 amino acids of FIP1L1 to the last 523 amino acids of PDGFR. This gene fusion and chromosomal deletion causes some forms of idiopathic hypereosinophilic syndrome (HES)( PMID: 12660384).

## Storage

**Storage:**  
Store at -20°C. Avoid exposure to light. Stable for one year after shipment.  
**Storage Buffer:**  
PBS with 50% Glycerol, 0.05% Proclin300, 0.5% BSA, pH 7.3.  
Aliquoting is unnecessary for -20°C storage

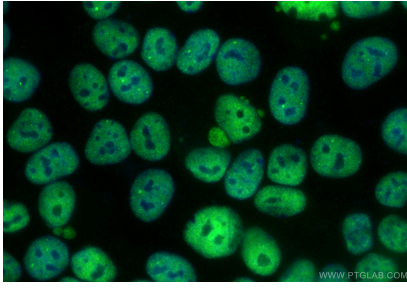
For technical support and original validation data for this product please contact:

T: 1 (888) 4PTGLAB (1-888-478-4522) (toll free  
in USA), or 1(312) 455-8498 (outside USA)

E: [proteintech@ptglab.com](mailto:proteintech@ptglab.com)  
W: [ptglab.com](http://ptglab.com)

This product is exclusively available under Proteintech Group brand and is not available to purchase from any other manufacturer.

## Selected Validation Data



Immunofluorescent analysis of (4% PFA) fixed MCF-7 cells using CoraLite® Plus 488 FIP1L1 antibody (CL488-83863-3, Clone: 240658A8) at dilution of 1:200.