

For Research Use Only

CoraLite® Plus 488-conjugated SLC31A1 Recombinant antibody

Catalog Number:CL488-83844-6



Basic Information

Catalog Number: CL488-83844-6	GenBank Accession Number: BC013611	Purification Method: Protein A purification
Size: 100ul , Concentration: 1000 ug/ml by Nanodrop;	GeneID (NCBI): 1317	CloneNo.: 240868E12
Source: Rabbit	UNIPROT ID: O15431	Recommended Dilutions: IF/ICC 1:50-1:500
Isotype: IgG	Full Name: solute carrier family 31 (copper transporters), member 1	Excitation/Emission maxima wavelengths: 493 nm / 522 nm
Immunogen Catalog Number: AG26601	Calculated MW: 21 kDa	

Applications

Tested Applications: IF/ICC	Positive Controls: IF/ICC : HepG2 cells,
Species Specificity: human	

Storage

Storage:
Store at -20°C. Avoid exposure to light. Stable for one year after shipment.
Storage Buffer:
PBS with 50% Glycerol, 0.05% Proclin300, 0.5% BSA, pH 7.3.
Aliquoting is unnecessary for -20°C storage

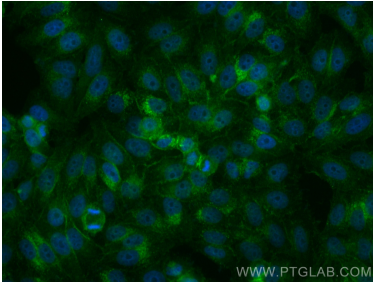
For technical support and original validation data for this product please contact:

T: 1 (888) 4PTGLAB (1-888-478-4522) (toll free in USA), or 1(312) 455-8498 (outside USA)

E: proteintech@ptglab.com
W: ptglab.com

This product is exclusively available under Proteintech Group brand and is not available to purchase from any other manufacturer.

Selected Validation Data



Immunofluorescent analysis of (4% PFA) fixed HepG2 cells using CoraLite® Plus 488 SLC31A1 antibody (CL488-83844-6, Clone: 240868E12) at dilution of 1:200.