

For Research Use Only

CoraLite® Plus 488-conjugated Fibrillin 1 Recombinant antibody

Catalog Number: CL488-83836-2



Basic Information

Catalog Number:

CL488-83836-2

Size:

100ul , Concentration: 1000 ug/ml by 2200

Nanodrop;

Source:

Rabbit

Isotype:

IgG

Immunogen Catalog Number:

AG30283

GenBank Accession Number:

BC146854

GeneID (NCBI):

2200

UNIPROT ID:

P35555

Full Name:

fibrillin 1

Purification Method:

Protein A purification

CloneNo.:

240960E11

Recommended Dilutions:

IF/ICC 1:50-1:500

Excitation/Emission maxima

wavelengths:

493 nm / 522 nm

Applications

Tested Applications:

IF/ICC

Species Specificity:

human

Positive Controls:

IF/ICC : HeLa cells,

Background Information

Fibrillin-1 belongs to the fibrillin family. Fibrillins are structural components of 10-12 nm extracellular calcium-binding microfibrils, which occur either in association with elastin or in elastin-free bundles. Fibrillin-1-containing microfibrils provide long-term force bearing structural support. Defects in Fibrillin-1 are a cause of Marfan syndrome (MFS), isolated ectopia lentis (EL), Weill-Marchesani syndrome autosomal dominant (ADWMS), Shprintzen-Goldberg craniosynostosis syndrome (SGS) or MASS syndrome.

Storage

Storage:

Store at -20°C. Avoid exposure to light. Stable for one year after shipment.

Storage Buffer:

PBS with 50% Glycerol, 0.05% Proclin300, 0.5% BSA, pH 7.3.

Aliquoting is unnecessary for -20°C storage

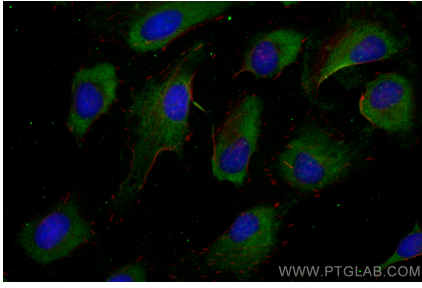
For technical support and original validation data for this product please contact:

T: 1 (888) 4PTGLAB (1-888-478-4522) (toll free in USA), or 1(312) 455-8498 (outside USA)

E: proteintech@ptglab.com
W: ptglab.com

This product is exclusively available under Proteintech Group brand and is not available to purchase from any other manufacturer.

Selected Validation Data



Immunofluorescent analysis of (-20°C Ethanol) fixed HeLa cells using CoraLite® Plus 488 Fibrillin 1 antibody (CL488-83836-2, Clone: 240960E11) at dilution of 1:200.