

For Research Use Only

CoraLite® Plus 488-conjugated Collagen Type I Recombinant antibody

Catalog Number:CL488-83752-5



Basic Information

Catalog Number: CL488-83752-5	GenBank Accession Number: BC054498	Purification Method: Protein A purification
Size: 100ul , Concentration: 1000 µg/ml by Nanodrop;	GeneID (NCBI): 1278	CloneNo.: 240665F8
Source: Rabbit	UNIPROT ID: P08123	Recommended Dilutions: IF/ICC 1:50-1:500
Isotype: IgG	Full Name: collagen, type I, alpha 2	Excitation/Emission maxima wavelengths: 493 nm / 522 nm
Immunogen Catalog Number: AG6281	Calculated MW: 1366 aa, 130 kDa	
	Observed MW: 120-130 kDa	

Applications

Tested Applications: IF/ICC	Positive Controls: IF/ICC : HSC-T6 cells,
Species Specificity: human, rat	

Background Information

Type I collagen, the major structural component of connective tissues such as skin, tendon and bone, is the most abundant and widely expressed collagen in humans (PMID: 7620364; 8645190; 9016532). Type I collagen is a heterotrimer comprising one alpha 2(I) and two alpha 1(I) chains which are encoded by the unlinked loci COL1A2 and COL1A1 respectively. Type I collagen has a molecular mass of about 250-300 kDa, while the alpha 2(I) chain has a molecular weight of about 100-140 kDa. Mutations in COL1A2 gene are associated with osteogenesis imperfecta, Ehlers-Danlos syndrome, idiopathic osteoporosis, and atypical Marfan syndrome. This antibody raised against 1017-1366 aa of human pro-alpha 2 chain of type I collagen can recognize collagen alpha 2(1) chain and C-terminal propeptide of pro-alpha 2(1) chain.

Storage

Storage:
Store at -20°C. Avoid exposure to light. Stable for one year after shipment.
Storage Buffer:
PBS with 50% Glycerol, 0.05% Proclin300, 0.5% BSA, pH 7.3.
Aliquoting is unnecessary for -20°C storage

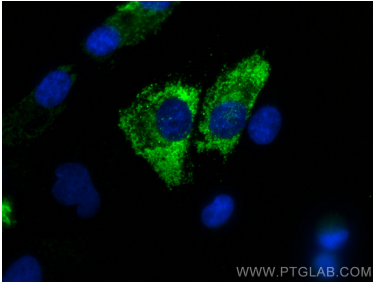
For technical support and original validation data for this product please contact:

T: 1 (888) 4PTGLAB (1-888-478-4522) (toll free in USA), or 1(312) 455-8498 (outside USA)

E: proteintech@ptglab.com
W: ptglab.com

This product is exclusively available under Proteintech Group brand and is not available to purchase from any other manufacturer.

Selected Validation Data



Immunofluorescent analysis of (4% PFA) fixed HSC-T6 cells using Coralite® Plus 488 Collagen Type I antibody (CL488-83752-5, Clone: 240665F8) at dilution of 1:200.