

For Research Use Only

CoraLite® Plus 488-conjugated ANAPC10 Recombinant antibody

Catalog Number:CL488-83570-4



Basic Information

Catalog Number: CL488-83570-4	GenBank Accession Number: BC005217	Purification Method: Protein A purification
Size: 100ul , Concentration: 1000 ug/ml by Nanodrop;	GeneID (NCBI): 10393	CloneNo.: 240492E7
Source: Rabbit	UNIPROT ID: Q9UM13	Recommended Dilutions: IF/ICC 1:50-1:500
Isotype: IgG	Full Name: anaphase promoting complex subunit 10	Excitation/Emission maximum wavelengths: 493 nm / 522 nm
Immunogen Catalog Number: AG8487	Calculated MW: 185 aa, 21 kDa	

Applications

Tested Applications: IF/ICC	Positive Controls: IF/ICC : HeLa cells,
Species Specificity: human	

Background Information

The anaphase promoting complex/cyclosome (APC/C) is a cell cycle-regulated multimeric E3 ubiquitin ligase assembled from 13 individual subunits. The anaphase promoting complex subunit 10 (APC10) is a core subunit of APC/C that is highly conserved in humans. APC10 genetically and physically interacts with a series of subunits of the APC/C and is necessary for the ubiquitination activity of APC/C by enhancing the affinity of the APC/C for its substrate.

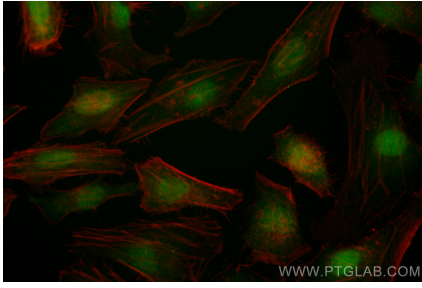
Storage

Storage:
Store at -20°C. Avoid exposure to light. Stable for one year after shipment.
Storage Buffer:
PBS with 50% Glycerol, 0.05% Proclin300, 0.5% BSA, pH 7.3.
Aliquoting is unnecessary for -20°C storage

For technical support and original validation data for this product please contact:
T: 1 (888) 4PTGLAB (1-888-478-4522) (toll free in USA), or 1(312) 455-8498 (outside USA)
E: proteintech@ptglab.com
W: ptglab.com

This product is exclusively available under Proteintech Group brand and is not available to purchase from any other manufacturer.

Selected Validation Data



Immunofluorescent analysis of (4% PFA) fixed HeLa cells using CoraLite® Plus 488 ANAPC10 antibody (CL488-83570-4, Clone: 240492E7) at dilution of 1:200.