

For Research Use Only

CoraLite® Plus 488-conjugated MED12L Recombinant antibody

Catalog Number:CL488-83540



Basic Information

Catalog Number: CL488-83540	GenBank Accession Number: NM_053002	Purification Method: Protein A purification
Size: 100ul , Concentration: 1000 ug/ml by Nanodrop;	GeneID (NCBI): 116931	CloneNo.: 240101C11
Source: Rabbit	UNIPROT ID: Q86YW9	Recommended Dilutions: IF/ICC 1:50-1:500
Isotype: IgG	Full Name: mediator complex subunit 12-like	Excitation/Emission maxima wavelengths: 493 nm / 522 nm
Immunogen Catalog Number: AG34636	Calculated MW: 240 kDa	

Applications

Tested Applications: IF/ICC	Positive Controls: IF/ICC : HepG2 cells,
Species Specificity: human	

Background Information

MED12L, also named as KIAA 1635, TNRC11L, TRALP and TRALPUSH, belongs to the Mediator complex subunit 12 family. MED12L may be a component of the Mediator complex, a coactivator involved in the regulated transcription of nearly all RNA polymerase II-dependent genes. MED12L is a mediator functions as a bridge to convey information from gene-specific regulatory proteins to the basal RNA polymerase II transcription machinery. MED12L is recruited to promoters by direct interactions with regulatory proteins and serves as a scaffold for the assembly of a functional preinitiation complex with RNA polymerase II and the general transcription factors. This antibody can recognize all the isoform of MED12L. This antibody has no cross-reaction to MED12.

Storage

Storage:
Store at -20°C. Avoid exposure to light. Stable for one year after shipment.
Storage Buffer:
PBS with 50% Glycerol, 0.05% Proclin300, 0.5% BSA, pH 7.3.
Aliquoting is unnecessary for -20°C storage

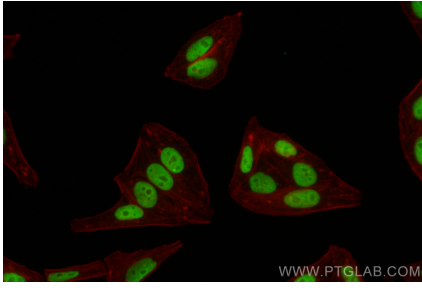
For technical support and original validation data for this product please contact:

T: 1 (888) 4PTGLAB (1-888-478-4522) (toll free
in USA), or 1(312) 455-8498 (outside USA)

E: proteintech@ptglab.com
W: ptglab.com

This product is exclusively available under Proteintech Group brand and is not available to purchase from any other manufacturer.

Selected Validation Data



Immunofluorescent analysis of (4% PFA) fixed HepG2 cells using Coralite® Plus 488 MED12L antibody (CL488-83540, Clone: 240101C11) at dilution of 1:200.