

For Research Use Only

CoraLite® Plus 488-conjugated RPS11 Recombinant antibody

Catalog Number:CL488-83517-3



Basic Information

Catalog Number: CL488-83517-3	GenBank Accession Number: BC007945	Purification Method: Protein A purification
Size: 100ul , Concentration: 1000 ug/ml by Nanodrop;	GeneID (NCBI): 6205	CloneNo.: 240327D11
Source: Rabbit	UNIPROT ID: P62280	Recommended Dilutions: IF/ICC 1:50-1:500
Isotype: IgG	Full Name: ribosomal protein S11	Excitation/Emission maxima wavelengths: 493 nm / 522 nm
Immunogen Catalog Number: AG34848	Calculated MW: 158 aa, 18 kDa	
	Observed MW: 18 kDa	

Applications

Tested Applications: IF/ICC	Positive Controls: IF/ICC : MCF-7 cells,
Species Specificity: human, mouse, rat	

Background Information

RPS11 is a ribosomal protein involved in ribosome biogenesis. It is a component of the small ribosomal subunit. The ribosome is a large ribonucleoprotein complex responsible for the synthesis of proteins in the cell.

Storage

Storage:
Store at -20°C. Avoid exposure to light. Stable for one year after shipment.
Storage Buffer:
PBS with 50% Glycerol, 0.05% Proclin300, 0.5% BSA, pH 7.3.
Aliquoting is unnecessary for -20°C storage

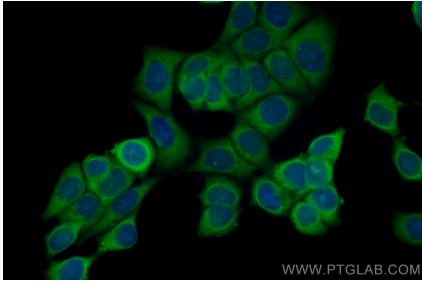
For technical support and original validation data for this product please contact:

T: 1 (888) 4PTGLAB (1-888-478-4522) (toll free
in USA), or 1(312) 455-8498 (outside USA)

E: proteintech@ptglab.com
W: ptglab.com

**This product is exclusively available under Proteintech
Group brand and is not available to purchase from any
other manufacturer.**

Selected Validation Data



Immunofluorescent analysis of (-20°C Ethanol) fixed MCF-7 cells using CoraLite® Plus 488 RPS11 antibody (CL488-83517-3, Clone: 240327D11) at dilution of 1:200.