

For Research Use Only

CoraLite® Plus 488-conjugated MRPL40 Recombinant antibody

Catalog Number:CL488-83515-4



Basic Information

Catalog Number: CL488-83515-4	GenBank Accession Number: BC009707	Purification Method: Protein A purification
Size: 100ul , Concentration: 1000 ug/ml by Nanodrop;	GeneID (NCBI): 64976	CloneNo.: 240506A9
Source: Rabbit	UNIPROT ID: Q9NQ50	Recommended Dilutions: IF/ICC 1:50-1:500
Isotype: IgG	Full Name: mitochondrial ribosomal protein L40	Excitation/Emission maxima wavelenghts: 493 nm / 522 nm
Immunogen Catalog Number: AG10341	Calculated MW: 206 aa, 24 kDa	
	Observed MW: 18-24 kDa	

Applications

Tested Applications: IF/ICC	Positive Controls: IF/ICC : HeLa cells,
Species Specificity: human	

Background Information

MRPL40, also known as NLVCF and URIM, belongs to the mitochondrion-specific ribosomal protein mL40 family. MRPL40 encodes the mitochondrial ribosomal protein L40 for the larger 39S subunit of mitochondrial ribosomes. MRPL40 is widely expressed in human organs and tissues, including the heart, brain, placenta, lung, liver, skeletal muscle, kidney, pancreas, spleen, thymus, prostate, ovary, small intestine, colon, peripheral blood lymphocyte (PBL), and testis. MRPL40 is also expressed in human fetuses and mouse embryos, suggesting its important role in fetal development (PMID: 36891938).

Storage

Storage:
Store at -20°C. Avoid exposure to light. Stable for one year after shipment.
Storage Buffer:
PBS with 50% Glycerol, 0.05% Proclin300, 0.5% BSA, pH 7.3.
Aliquoting is unnecessary for -20°C storage

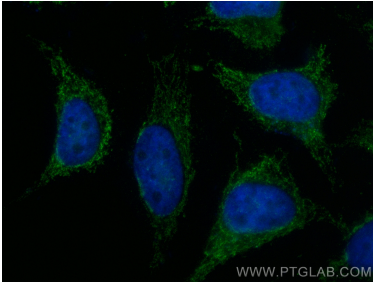
For technical support and original validation data for this product please contact:

T: 1 (888) 4PTGLAB (1-888-478-4522) (toll free in USA), or 1(312) 455-8498 (outside USA)

E: proteintech@ptglab.com
W: ptglab.com

This product is exclusively available under Proteintech Group brand and is not available to purchase from any other manufacturer.

Selected Validation Data



Immunofluorescent analysis of (4% PFA) fixed HeLa cells using CoraLite® Plus 488 MRPL40 antibody (CL488-83515-4, Clone: 240506A9) at dilution of 1:200.