

For Research Use Only

# CoraLite® Plus 488-conjugated MDC1 Recombinant antibody

Catalog Number:CL488-83496



## Basic Information

<b>Catalog Number:</b> CL488-83496	<b>GenBank Accession Number:</b> BC152556	<b>Purification Method:</b> Protein A purification
<b>Size:</b> 100ul , Concentration: 1000 ug/ml by Nanodrop;	<b>GeneID (NCBI):</b> 9656	<b>CloneNo.:</b> 240469D5
<b>Source:</b> Rabbit	<b>UNIPROT ID:</b> Q14676	<b>Recommended Dilutions:</b> IF/ICC 1:50-1:500
<b>Isotype:</b> IgG	<b>Full Name:</b> mediator of DNA damage checkpoint 1	<b>Excitation/Emission maxima wavelengths:</b> 493 nm / 522 nm
<b>Immunogen Catalog Number:</b> AG20135	<b>Calculated MW:</b> 2089 aa, 227 kDa	
	<b>Observed MW:</b> 260-320 kDa	

## Applications

<b>Tested Applications:</b> IF/ICC, FC (Intra)	<b>Positive Controls:</b> IF/ICC : HeLa cells,
<b>Species Specificity:</b> human	

## Background Information

MDC1, also named as KIAA0170 or NFBFD1, is a 2089 amino acid protein, which contains two BRCT domains and one FHA domain. MDC1 localizes in the nucleus and is highly expressed in testis. MDC1 is required for checkpoint mediated cell cycle arrest in response to DNA damage within both the S phase and G2/M phases of the cell cycle. MDC1 may serve as a scaffold for the recruitment of DNA repair and signal transduction proteins to discrete foci of DNA damage marked.

## Storage

**Storage:**  
Store at -20°C. Avoid exposure to light. Stable for one year after shipment.  
**Storage Buffer:**  
PBS with 50% Glycerol, 0.05% Proclin300, 0.5% BSA, pH 7.3.  
Aliquoting is unnecessary for -20°C storage

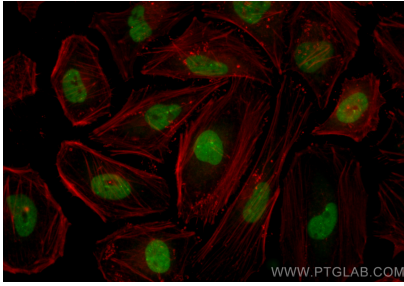
For technical support and original validation data for this product please contact:

T: 1 (888) 4PTGLAB (1-888-478-4522) (toll free  
in USA), or 1(312) 455-8498 (outside USA)

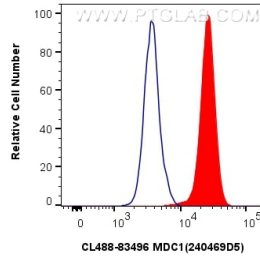
E: proteintech@ptglab.com  
W: ptglab.com

This product is exclusively available under Proteintech Group brand and is not available to purchase from any other manufacturer.

## Selected Validation Data



Immunofluorescent analysis of (4% PFA) fixed HeLa cells using CoraLite® Plus 488 MDC1 antibody (CL488-83496, Clone: 240469D5) at dilution of 1:200.



1x10<sup>6</sup> HeLa cells were intracellularly stained with 0.4 ug CoraLite® Plus 488-conjugated MDC1 Recombinant antibody (CL488-83496, Clone:240469D5)(red), or 0.4 ug CoraLite® Plus 488-conjugated Rabbit IgG control Rabbit PolyAb (CL488-30000) (blue). Cells were fixed and permeabilized with Transcription Factor Staining Buffer Kit (PF00011).