

For Research Use Only

CoraLite® Plus 488-conjugated RPP30 Recombinant antibody

Catalog Number:CL488-83481-5



Basic Information

Catalog Number:

CL488-83481-5

Size:

100ul , Concentration: 1000 ug/ml by
Nanodrop;

Source:

Rabbit

Isotype:

IgG

Immunogen Catalog Number:

AG8600

GenBank Accession Number:

BC006991

GeneID (NCBI):

10556

UNIPROT ID:

P78346

Full Name:

ribonuclease P/MRP 30kDa subunit

Calculated MW:

268 aa, 29 kDa

Observed MW:

30 kDa

Purification Method:

Protein A purification

CloneNo.:

240468E4

Recommended Dilutions:

IF/ICC 1:50-1:500

Excitation/Emission maxima

wavelengths:

493 nm / 522 nm

Applications

Tested Applications:

IF/ICC

Species Specificity:

human, mouse

Positive Controls:

IF/ICC : U-251 cells,

Background Information

RPP30 is a part of multimeric ribonuclease P complex and ribonuclease MRP complex. It is also a component of the MRP ribonuclease complex, which cleaves pre-rRNA sequences.

Storage

Storage:

Store at -20°C. Avoid exposure to light. Stable for one year after shipment.

Storage Buffer:

PBS with 50% Glycerol, 0.05% Proclin300, 0.5% BSA, pH 7.3.

Aliquoting is unnecessary for -20°C storage

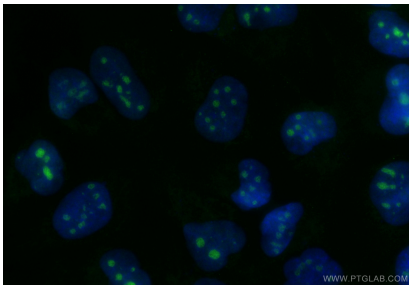
For technical support and original validation data for this product please contact:

T: 1 (888) 4PTGLAB (1-888-478-4522) (toll free
in USA), or 1(312) 455-8498 (outside USA)

E: proteintech@ptglab.com
W: ptglab.com

This product is exclusively available under Proteintech Group brand and is not available to purchase from any other manufacturer.

Selected Validation Data



Immunofluorescent analysis of (4% PFA) fixed U-251 cells using CoraLite® Plus 488 RPP30 antibody (CL488-83481-5, Clone: 240468E4) at dilution of 1:200.