

For Research Use Only

# CoraLite® Plus 488-conjugated SAT1 Recombinant antibody

Catalog Number:CL488-83319



## Basic Information

Catalog Number:

CL488-83319

Size:

100ul , Concentration: 1000 ug/ml by  
Nanodrop;

Source:

Rabbit

Isotype:

IgG

Immunogen Catalog Number:

AG1154

GenBank Accession Number:

BC008424

GeneID (NCBI):

6303

UNIPROT ID:

P21673

Full Name:

spermidine/spermine N1-  
acetyltransferase 1

Calculated MW:

20 kDa

Observed MW:

15-25 kDa

Purification Method:

Protein A purification

CloneNo.:

240157G2

Recommended Dilutions:

IF/ICC 1:50-1:500

Excitation/Emission maxima  
wavelengths:

493 nm / 522 nm

## Applications

Tested Applications:

IF/ICC

Species Specificity:

human

Positive Controls:

IF/ICC : RAW 264.7 cells,

## Background Information

Spermidine/spermine N1-acetyltransferase 1 (SAT1 or SSAT1) is the key regulatory enzyme in the catabolism of polyamines, catalyzing acetylation of spermidine or spermine to generate N1-acetyl spermidine or N1-acetyl spermine, and N1, N12-diacetylspermine. The cellular level of SAT1 is normally extremely low, but it is induced rapidly by a variety of stimuli, including polyamines, polyamine analogs, toxic chemicals, certain drugs, and growth factors. Downregulation of SAT1 has been reported in Epstein-Barr virus positive Burkitt's lymphoma cells.

## Storage

Storage:

Store at -20°C. Avoid exposure to light. Stable for one year after shipment.

Storage Buffer:

PBS with 50% Glycerol, 0.05% Proclin300, 0.5% BSA, pH 7.3.

Aliquoting is unnecessary for -20°C storage

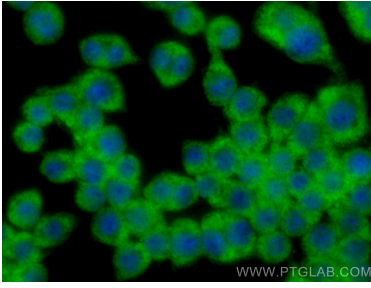
For technical support and original validation data for this product please contact:

T: 1 (888) 4PTGLAB (1-888-478-4522) (toll free  
in USA), or 1(312) 455-8498 (outside USA)

E: [proteintech@ptglab.com](mailto:proteintech@ptglab.com)  
W: [ptglab.com](http://ptglab.com)

This product is exclusively available under Proteintech Group brand and is not available to purchase from any other manufacturer.

## Selected Validation Data



Immunofluorescent analysis of (-20°C Ethanol) fixed RAW 264.7 cells using CoraLite® Plus 488 SAT1 antibody (CL488-83319, Clone: 240157G2 ) at dilution of 1:200.