

For Research Use Only

CoraLite® Plus 488-conjugated EFHD2 Recombinant antibody

Catalog Number: CL488-83264-5



Basic Information

Catalog Number: CL488-83264-5	GenBank Accession Number: BC023611	Purification Method: Protein A purification
Size: 100ul , Concentration: 1000 µg/ml by Nanodrop;	GeneID (NCBI): 79180	CloneNo.: 240185H5
Source: Rabbit	UNIPROT ID: Q96C19	Recommended Dilutions: IF/ICC 1:50-1:500
Isotype: IgG	Full Name: EF-hand domain family, member D2	Excitation/Emission maxima wavelengths: 493 nm / 522 nm
Immunogen Catalog Number: AG35084	Calculated MW: 27 kDa	
	Observed MW: 33 kDa	

Applications

Tested Applications: IF/ICC	Positive Controls: IF/ICC : A431 cells,
Species Specificity: human	

Background Information

EFHD2 also named Swiprosin-1, is a Ca²⁺ binding actin protein. The expression of EFHD2 is upregulated during the activation of immune cells, epithelial and endothelial cells. The expression of EFHD2 is regulated by diverse signaling pathways that are contingent upon the specific type of cells. EFHD2 consists of 240 amino-acids. Based on the composition, the predicted molecular weight was reported to be 27 KDa while the apparent molecular weight was 33 KDa.

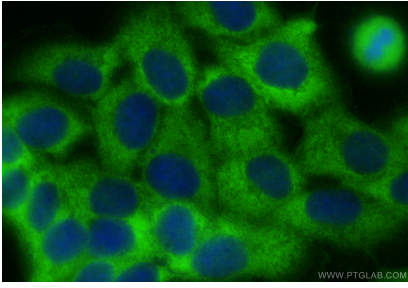
Storage

Storage:
Store at -20°C. Avoid exposure to light. Stable for one year after shipment.
Storage Buffer:
PBS with 50% Glycerol, 0.05% Proclin300, 0.5% BSA, pH 7.3.
Aliquoting is unnecessary for -20°C storage

For technical support and original validation data for this product please contact:
T: 1 (888) 4PTGLAB (1-888-478-4522) (toll free in USA), or 1(312) 455-8498 (outside USA)
E: proteintech@ptglab.com
W: ptglab.com

This product is exclusively available under Proteintech Group brand and is not available to purchase from any other manufacturer.

Selected Validation Data



Immunofluorescent analysis of (-20°C Methanol) fixed A431 cells using CoraLite® Plus 488 EFHD2 antibody (CL488-83264-5, Clone: 240185H5) at dilution of 1:200.