

For Research Use Only

CoraLite® Plus 488-conjugated NUDCD2 Recombinant antibody

Catalog Number:CL488-83217-5



Basic Information

Catalog Number:

CL488-83217-5

Size:

100ul , Concentration: 1000 ug/ml by
Nanodrop;

Source:

Rabbit

Isotype:

IgG

Immunogen Catalog Number:

AG15579

GenBank Accession Number:

BC017934

GeneID (NCBI):

134492

UNIPROT ID:

Q8WVJ2

Full Name:

NudC domain containing 2

Calculated MW:

157 aa, 18 kDa

Observed MW:

18 kDa

Purification Method:

Protein A purification

CloneNo.:

230513A5

Recommended Dilutions:

IF/ICC 1:50-1:500

**Excitation/Emission maxima
wavelengths:**

493 nm / 522 nm

Applications

Tested Applications:

IF/ICC

Species Specificity:

human

Positive Controls:

IF/ICC : HepG2 cells,

Background Information

NUDCD2, also known as NudCL2, is an HSP90 cochaperone that regulates sister chromatid cohesion during mitosis. NUDCD2 also plays a role in ciliogenesis(PMID: 30368549, 34480124). NUDCD2 regulates the LIS1/dynein pathway by stabilizing LIS1 with Hsp90 chaperone(PMID: 20133715).

Storage

Storage:

Store at -20°C. Avoid exposure to light. Stable for one year after shipment.

Storage Buffer:

PBS with 50% Glycerol, 0.05% Proclin300, 0.5% BSA, pH 7.3.

Aliquoting is unnecessary for -20°C storage

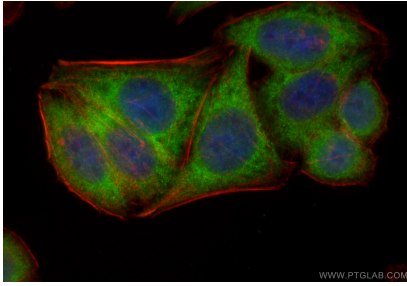
For technical support and original validation data for this product please contact:

T: 1 (888) 4PTGLAB (1-888-478-4522) (toll free
in USA), or 1(312) 455-8498 (outside USA)

E: proteintech@ptglab.com
W: ptglab.com

This product is exclusively available under Proteintech Group brand and is not available to purchase from any other manufacturer.

Selected Validation Data



Immunofluorescent analysis of (-20°C Ethanol) fixed HepG2 cells using CoraLite® Plus 488 NUDCD2 antibody (CL488-83217-5, Clone: 230513A5) at dilution of 1:200, CL594-Phalloidin (red).