

For Research Use Only

# CoraLite® Plus 488-conjugated HIRA Recombinant antibody

Catalog Number:CL488-83194-5



## Basic Information

<b>Catalog Number:</b> CL488-83194-5	<b>GenBank Accession Number:</b> NM_003325	<b>Purification Method:</b> Protein A purification
<b>Size:</b> 100ul , Concentration: 1000 ug/ml by Nanodrop;	<b>GeneID (NCBI):</b> 7290	<b>CloneNo.:</b> 240006E5
<b>Source:</b> Rabbit	<b>UNIPROT ID:</b> P54198	<b>Recommended Dilutions:</b> IF/ICC 1:50-1:500
<b>Isotype:</b> IgG	<b>Full Name:</b> HIR histone cell cycle regulation defective homolog A (S. cerevisiae)	<b>Excitation/Emission maxima wavelengths:</b> 493 nm / 522 nm
<b>Immunogen Catalog Number:</b> AG34439	<b>Calculated MW:</b> 112 kDa	

## Applications

<b>Tested Applications:</b> IF/ICC	<b>Positive Controls:</b> IF/ICC : HeLa cells,
<b>Species Specificity:</b> human	

## Background Information

HIRA protein is encoded by a gene within a region of human chromosome 22q11.2 deleted in most patients with the DiGeorge syndrome, a developmental disorder, and was named for its amino acid sequence homology to two *S. cerevisiae* proteins, Hir1p and Hir2p. HIRA is critical in a specific chromatin assembly pathway that takes place independently of DNA synthesis (PMID: 12049744). HIRA complex associates with various proteins, such as transcription factors, RNA pol II, Prohibitin (PHB), and replication protein A (RPA) suggests that the targeting of the complex at specific locations may exploit additional structural properties and mechanisms (PMID: 30082790).

## Storage

**Storage:**  
Store at -20°C. Avoid exposure to light. Stable for one year after shipment.  
**Storage Buffer:**  
PBS with 50% Glycerol, 0.05% Proclin300, 0.5% BSA, pH 7.3.  
Aliquoting is unnecessary for -20°C storage

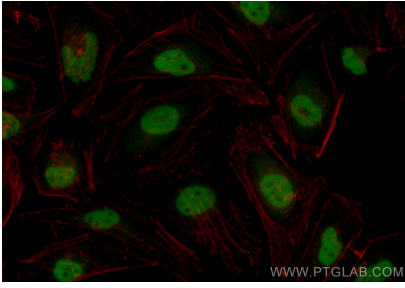
For technical support and original validation data for this product please contact:

T: 1 (888) 4PTGLAB (1-888-478-4522) (toll free in USA), or 1(312) 455-8498 (outside USA)

E: [proteintech@ptglab.com](mailto:proteintech@ptglab.com)  
W: [ptglab.com](http://ptglab.com)

**This product is exclusively available under Proteintech Group brand and is not available to purchase from any other manufacturer.**

## Selected Validation Data



Immunofluorescent analysis of (4% PFA) fixed HeLa cells using CoraLite® Plus 488 HIRA antibody (CL488-83194-5, Clone: 240006E5) at dilution of 1:200.