

For Research Use Only

CoraLite® Plus 488-conjugated MMP13 Recombinant antibody

Catalog Number:CL488-83188-2



Basic Information

Catalog Number: CL488-83188-2	GenBank Accession Number: BC074808	Purification Method: Protein A purification
Size: 100ul , Concentration: 1000 ug/ml by Nanodrop;	GeneID (NCBI): 4322	CloneNo.: 240060B10
Source: Rabbit	UNIPROT ID: P45452	Recommended Dilutions: IF/ICC 1:50-1:500
Isotype: IgG	Full Name: matrix metalloproteinase 13	Excitation/Emission maxima wavelengths: 493 nm / 522 nm
Immunogen Catalog Number: AG34892	Calculated MW: 471 aa, 54 kDa	
	Observed MW: 70 kDa, 54 kDa	

Applications

Tested Applications: IF/ICC	Positive Controls: IF/ICC : MCF-7 cells,
Species Specificity: human	

Background Information

MMP-13(Matrix metalloproteinase-13), cleaves type I collagen and was previously thought to be the rodent analogue of human interstitial MMP-1. MMP-13 is found in hypertrophic and calcifying cartilage of mammalian growth plate. The bands seen with rat MMP-13 are consistent with a 59-kDa latent form and a 43-kDa active form reported for this enzyme, along with a smaller band at approximately 30 kDa(PMID:10771523).

Storage

Storage:
Store at -20°C. Avoid exposure to light. Stable for one year after shipment.
Storage Buffer:
PBS with 50% Glycerol, 0.05% Proclin300, 0.5% BSA, pH 7.3.
Aliquoting is unnecessary for -20°C storage

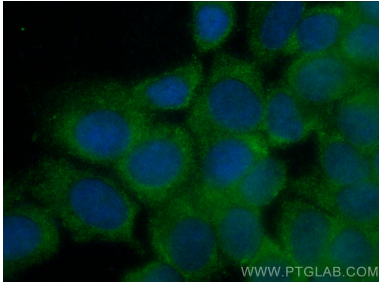
For technical support and original validation data for this product please contact:

T: 1 (888) 4PTGLAB (1-888-478-4522) (toll free
in USA), or 1(312) 455-8498 (outside USA)

E: proteintech@ptglab.com
W: ptglab.com

This product is exclusively available under Proteintech Group brand and is not available to purchase from any other manufacturer.

Selected Validation Data



Immunofluorescent analysis of (-20°C Methanol) fixed MCF-7 cells using CoraLite® Plus 488 MMP13 antibody (CL488-83188-2, Clone: 240060B10) at dilution of 1:200.