

For Research Use Only

CoraLite® Plus 488-conjugated SMAD4 Recombinant antibody



Catalog Number: CL488-83169-5

Basic Information

Catalog Number: CL488-83169-5	GenBank Accession Number: BC002379	Purification Method: Protein A purification
Size: 100ul , Concentration: 1000 µg/ml by Nanodrop;	GeneID (NCBI): 4089	CloneNo.: 240026G9
Source: Rabbit	UNIPROT ID: Q13485	Recommended Dilutions: IF/ICC 1:50-1:500
Isotype: IgG	Full Name: SMAD family member 4	Excitation/Emission maxima wavelengths: 493 nm / 522 nm
Immunogen Catalog Number: AG0299	Calculated MW: 60 kDa	
	Observed MW: 63-70 kDa	

Applications

Tested Applications: IF/ICC, FC (Intra)	Positive Controls: IF/ICC : HepG2 cells,
Species Specificity: Human, mouse	

Background Information

Mammalian homologs of the Drosophila Mad gene include Smad1, Smad2, Smad3, Smad4 (DPC4), Smad5, Smad6, Smad7 and Smad8. Smad1 and Smad5 are effectors of BMP2 and BMP4 function while Smad2 and Smad3 are involved in TGF and activin-mediated growth modulation. Smad4 has been shown to mediate all of the above activities through interaction with various Smad family members. Smad6 and Smad7 regulate the response to activin/ TGF signaling by interfering with TGF-mediated phosphorylation of other Smad family members.

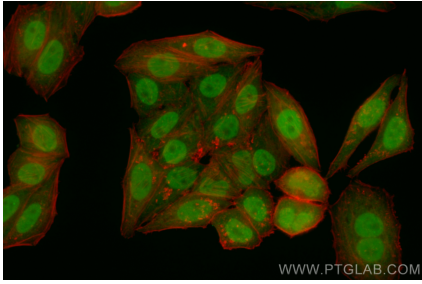
Storage

Storage:
Store at -20°C. Avoid exposure to light.
Storage Buffer:
PBS with 50% Glycerol, 0.05% Proclin300, 0.5% BSA, pH 7.3.
Aliquoting is unnecessary for -20°C storage

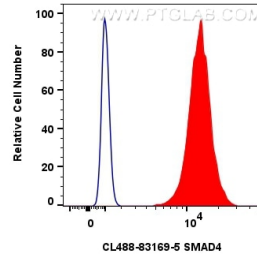
For technical support and original validation data for this product please contact:
T: 1 (888) 4PTGLAB (1-888-478-4522) (toll free in USA), or 1(312) 455-8498 (outside USA) E: proteintech@ptglab.com
W: ptglab.com

This product is exclusively available under Proteintech Group brand and is not available to purchase from any other manufacturer.

Selected Validation Data



Immunofluorescent analysis of (4% PFA) fixed HepG2 cells using CoraLite® Plus 488 SMAD4 antibody (CL488-83169-5, Clone: 240026G9) at dilution of 1:200.



1x10⁶ HepG2 cells were intracellularly stained with 0.8 ug CoraLite® Plus 488 Smad4 Recombinant Antibody (CL488-83169-5, Clone:240026G9)(red), or 0.8 ug CoraLite® Plus 488-conjugated Rabbit IgG control Rabbit PolyAb (CL488-30000) (blue). Cells were fixed and permeabilized with Transcription Factor Staining Buffer Kit (PF00011).