

For Research Use Only

CoraLite® Plus 488-conjugated SAR1A Recombinant antibody

Catalog Number:CL488-83168-7



Basic Information

Catalog Number: CL488-83168-7	GenBank Accession Number: NM_020150	Purification Method: Protein A purification
Size: 100ul , Concentration: 1000 ug/ml by Nanodrop;	GeneID (NCBI): 56681	CloneNo.: 230471A1
Source: Rabbit	UNIPROT ID: Q9NR31	Recommended Dilutions: IF/ICC 1:50-1:500
Isotype: IgG	Full Name: SAR1 homolog A (S. cerevisiae)	Excitation/Emission maxima wavelengths: 493 nm / 522 nm
	Calculated MW: 22 kDa	

Applications

Tested Applications: IF/ICC	Positive Controls: IF/ICC : HepG2 cells,
Species Specificity: human	

Background Information

SAR1A, also named as SAR1, SARA and SARA1, belongs to the small GTPase superfamily and SAR1 family. It is involved in transport from the endoplasmic reticulum to the Golgi apparatus. SAR1A is required to maintain SEC16A localization at discrete locations on the ER membrane perhaps by preventing its dissociation. SAR1A-GTP-dependent assembly of SEC16A on the ER membrane forms an organized scaffold defining endoplasmic reticulum exit sites (ERES).

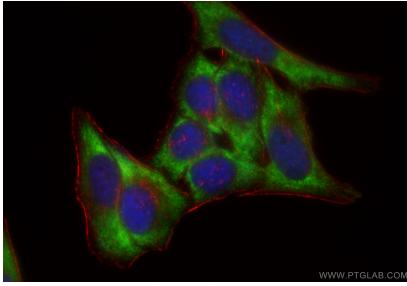
Storage

Storage:
Store at -20°C. Avoid exposure to light. Stable for one year after shipment.
Storage Buffer:
PBS with 50% Glycerol, 0.05% Proclin300, 0.5% BSA, pH 7.3.
Aliquoting is unnecessary for -20°C storage

For technical support and original validation data for this product please contact:
T: 1 (888) 4PTGLAB (1-888-478-4522) (toll free in USA), or 1(312) 455-8498 (outside USA)
E: proteintech@ptglab.com
W: ptglab.com

This product is exclusively available under Proteintech Group brand and is not available to purchase from any other manufacturer.

Selected Validation Data



Immunofluorescent analysis of (-20°C Ethanol) fixed HepG2 cells using CoraLite® Plus 488 SAR1A antibody (CL488-83168-7, Clone: 230471A1) at dilution of 1:200, CL594-Phalloidin (red).