

For Research Use Only

# CoraLite® Plus 488-conjugated TGFB2/TGF-beta 2 Recombinant antibody

Catalog Number: CL488-83167-5



## Basic Information

<b>Catalog Number:</b> CL488-83167-5	<b>GenBank Accession Number:</b> NM_003238	<b>Purification Method:</b> Protein A purification
<b>Size:</b> 100ul , Concentration: 1000 ug/ml by Nanodrop;	<b>GeneID (NCBI):</b> 7042	<b>CloneNo.:</b> 230461F5
<b>Source:</b> Rabbit	<b>UNIPROT ID:</b> P61812	<b>Recommended Dilutions:</b> IF/ICC 1:50-1:500
<b>Isotype:</b> IgG	<b>Full Name:</b> transforming growth factor, beta 2	<b>Excitation/Emission maxima wavelengths:</b> 493 nm / 522 nm
	<b>Calculated MW:</b> 48 kDa	

## Applications

<b>Tested Applications:</b> IF/ICC	<b>Positive Controls:</b> IF/ICC : HeLa cells,
<b>Species Specificity:</b> human	

## Background Information

Transforming growth factor beta-2 (TGFB2), also named G-TSF, BSC-1 cell growth inhibitor, Polyergin and Cetermin, belongs to the TGF-beta family. TGFB2 is a secreted protein and contains a 19aa signal peptides at its N-terminal. Heterodimers with TGFB1 and with TGFB2 have been found in bone. It was proved to have suppressive effects on interleukin-2 dependent T-cell growth.

## Storage

**Storage:**  
Store at -20°C. Avoid exposure to light. Stable for one year after shipment.  
**Storage Buffer:**  
PBS with 50% Glycerol, 0.05% Proclin300, 0.5% BSA, pH 7.3.  
**Aliquoting is unnecessary for -20°C storage**

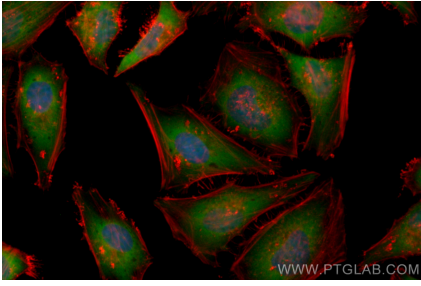
For technical support and original validation data for this product please contact:

T: 1 (888) 4PTGLAB (1-888-478-4522) (toll free  
in USA), or 1(312) 455-8498 (outside USA)

E: [proteintech@ptglab.com](mailto:proteintech@ptglab.com)  
W: [ptglab.com](http://ptglab.com)

**This product is exclusively available under Proteintech Group brand and is not available to purchase from any other manufacturer.**

## Selected Validation Data



Immunofluorescent analysis of (4% PFA) fixed HeLa cells using CoraLite® Plus 488 TGFβ2-Specific antibody (CL488-83167-5, Clone: 230461F5) at dilution of 1:200.