

For Research Use Only

CoraLite® Plus 488-conjugated CELSR2 Recombinant antibody

Catalog Number:CL488-83115



Basic Information

| | | |
|---|--|---|
| Catalog Number: CL488-83115 | GenBank Accession Number: NM_001408 | Purification Method: Protein A purification |
| Size: 100ul , Concentration: 1000 µg/ml by Nanodrop; | GeneID (NCBI): 1952 | CloneNo.: 230319H5 |
| Source: Rabbit | UNIPROT ID: Q9HCU4 | Recommended Dilutions: IF/ICC 1:50-1:500 |
| Isotype: IgG | Full Name: cadherin, EGF LAG seven-pass G-type receptor 2 (flamingo homolog, Drosophila) | Excitation/Emission maxima wavelengths: 493 nm / 522 nm |
| | Calculated MW: 318 kDa | |

Applications

| | |
|---------------------------------------|--|
| Tested Applications: IF/ICC | Positive Controls: IF/ICC : SH-SY5Y cells, |
| Species Specificity: human | |

Background Information

CELSR2, also named CDHF10, EGFL2, KIAA0279, and MEGF3, belongs to the G-protein coupled receptor 2 family and LN-TM7 subfamily. It is a receptor that may be important in cell/cell signaling during nervous system formation.

Storage

Storage:
Store at -20°C. Avoid exposure to light. Stable for one year after shipment.
Storage Buffer:
PBS with 50% Glycerol, 0.05% Proclin300, 0.5% BSA, pH 7.3.
Aliquoting is unnecessary for -20°C storage

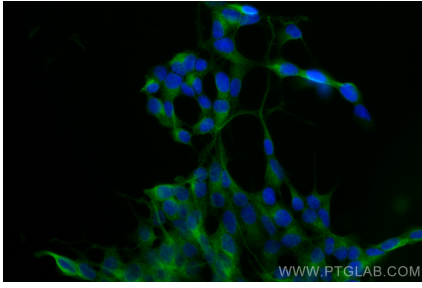
For technical support and original validation data for this product please contact:

T: 1 (888) 4PTGLAB (1-888-478-4522) (toll free
in USA), or 1(312) 455-8498 (outside USA)

E: proteintech@ptglab.com
W: ptglab.com

This product is exclusively available under Proteintech Group brand and is not available to purchase from any other manufacturer.

Selected Validation Data



Immunofluorescent analysis of (4% PFA) fixed SH-SY5Y cells using CoraLite® Plus 488 CELSR2 antibody (CL488-83115, Clone: 230319H5) at dilution of 1:200.